

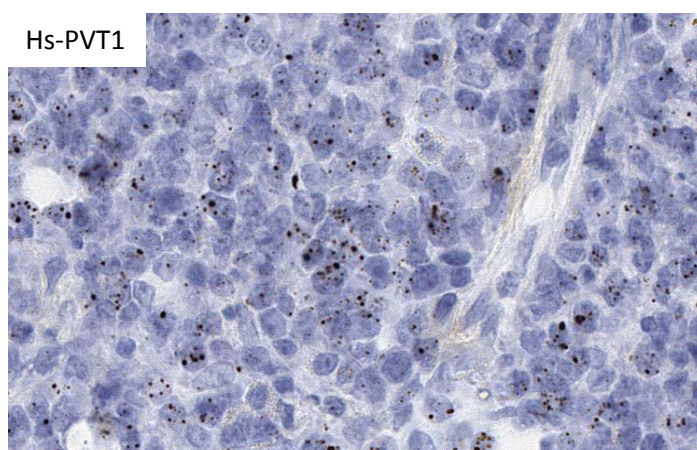
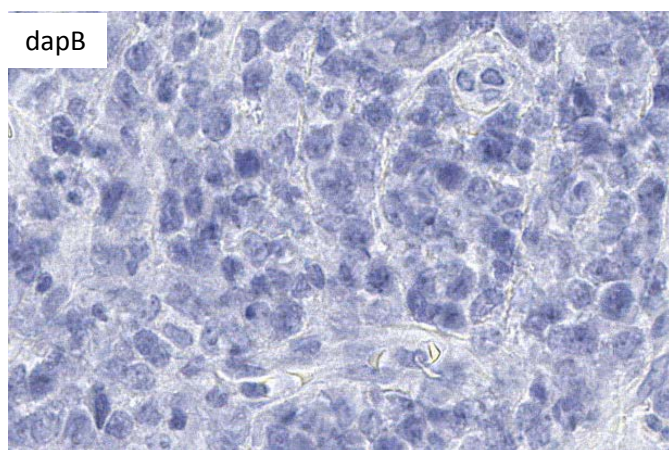
ADVANCED CELL DIAGNOSTICS

RNASCOPE® PROBE INFORMATION

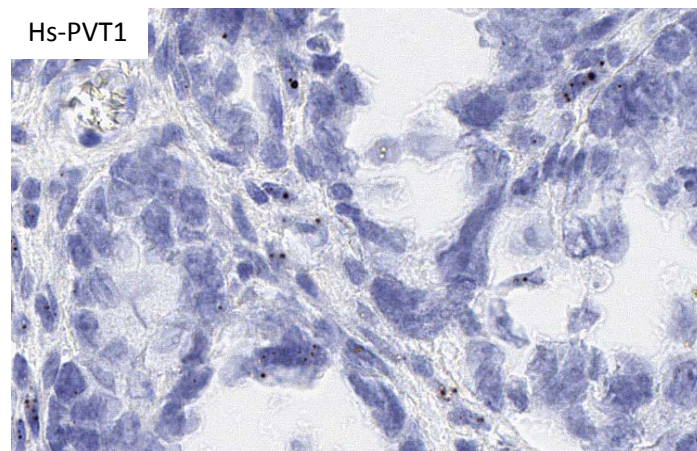
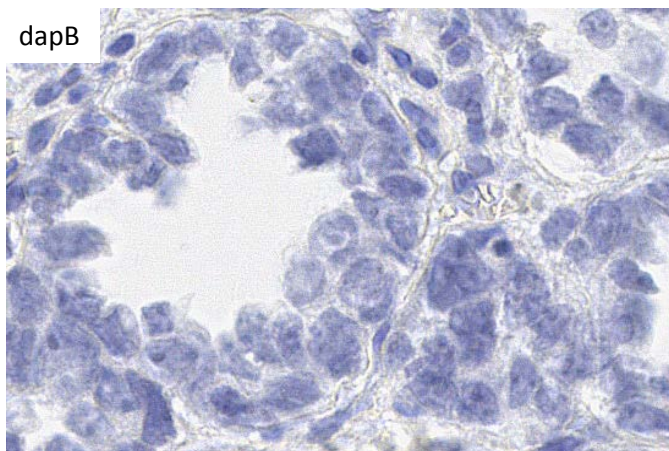
Catalog number:	406951 (Manual)*, 406599 (2.5 VS assay)*, 406598 (2.5 LS assay)*
Species:	Homo sapiens
Target Gene:	PVT1
Alternate names:	LINC00079; NCRNA00079; onco-lncRNA-100; PVT1
Entrez Gene ID:	5820
Accession#:	NR_003367.2
Unigene:	Hs.675281
Target Sequence:	Homo sapiens Pvt1 oncogene (non-protein coding) (PVT1), non-coding RNA
Probe Region:	366 - 1535
ZZ pair number:	20

* Target region is the same across RNAscope® manual and automation assays

PROBE DATA



RNAscope® Manual Brown Assay performed on FFPE lymphoma tissue under standard condition, using the dapB Negative Control probe (Left; Cat. No. 310043) and Hs-PVT1 probe (Right; Cat. No.406591), 40X



RNAscope® Manual Brown Assay performed on FFPE gastric cancer tissue under standard condition, using the dapB Negative Control probe (Left; Cat. No. 310043) and Hs-PVT1 probe (Right; Cat. No.406591), 40X

For more information regarding this target gene: <http://www.ncbi.nlm.nih.gov/gene/5820>

Note: ACD always recommends RNA quality verification using control probes, prior to running a target marker.

Expression pattern may vary from data shown here based on tissue preparation methods and/or associated sample biology.