

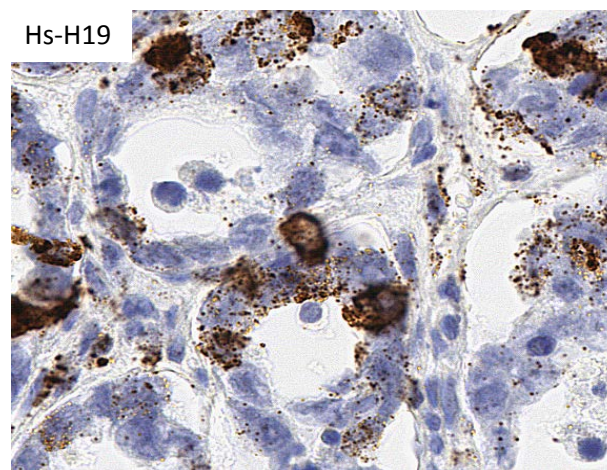
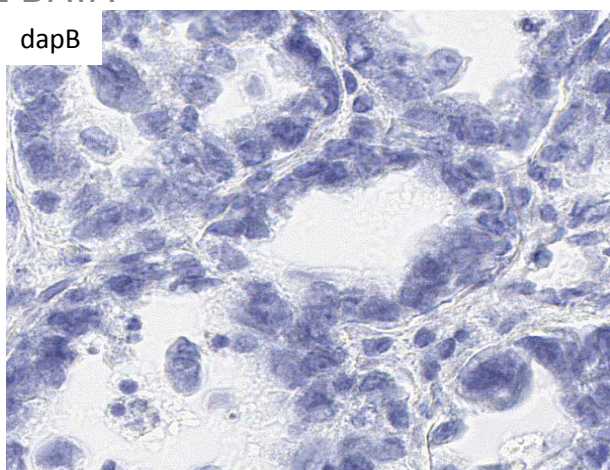
ADVANCED CELL DIAGNOSTICS

RNASCOPE® PROBE INFORMATION

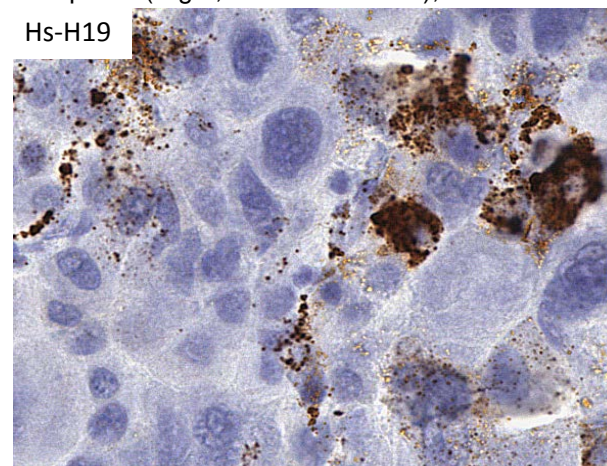
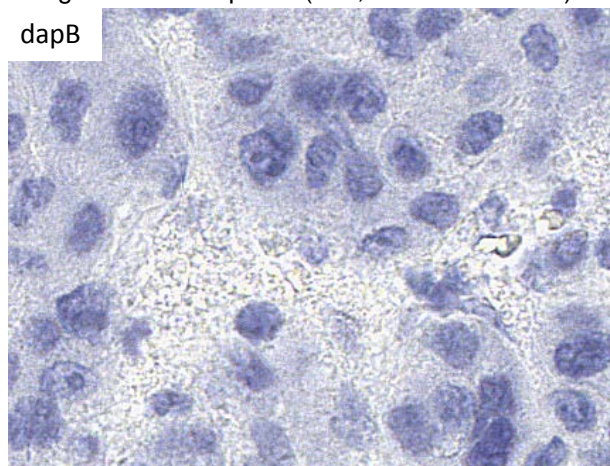
Catalog number:	400771 (Manual)*, 400779 (2.5 VS assay)*, 400778 (2.5 LS assay)*
Species:	Homo sapiens
Target Gene:	H19
Alternate names:	ASM; ASM1; BWS; D11S813E; H19; LINC00008; NCRNA00008; PRO2605; WT2
Entrez Gene ID:	283120
Accession#:	NR_002196.1
Unigene:	Hs.533566: 3057
Target Sequence:	Homo sapiens H19, imprinted maternally expressed transcript (non-protein coding) (H19), non-coding RNA
Probe Region:	90-2090
ZZ pair number:	20

* Target region is the same across RNAScope® manual and automation assays

PROBE DATA



RNAseScope® Manual Brown Assay performed on FFPE ovarian cancer tissue under standard condition, using the dapB Negative Control probe (Left; Cat. No. 310043) and Hs-H19 probe (Right; Cat. No. 400771), 40X



RNAseScope® Manual Brown Assay performed on FFPE liver cancer tissue under standard condition, using the dapB Negative Control probe (Left; Cat. No. 310043) and Hs-H19 probe (Right; Cat. No. 400771), 40X

For more information regarding this target gene: <http://www.ncbi.nlm.nih.gov/gene/283120>

Note: ACD always recommends RNA quality verification using control probes, prior to running a target marker.

Expression pattern may vary from data shown here based on tissue preparation methods and/or associated sample biology.