



# TARGET PROBE: HS-MALAT1

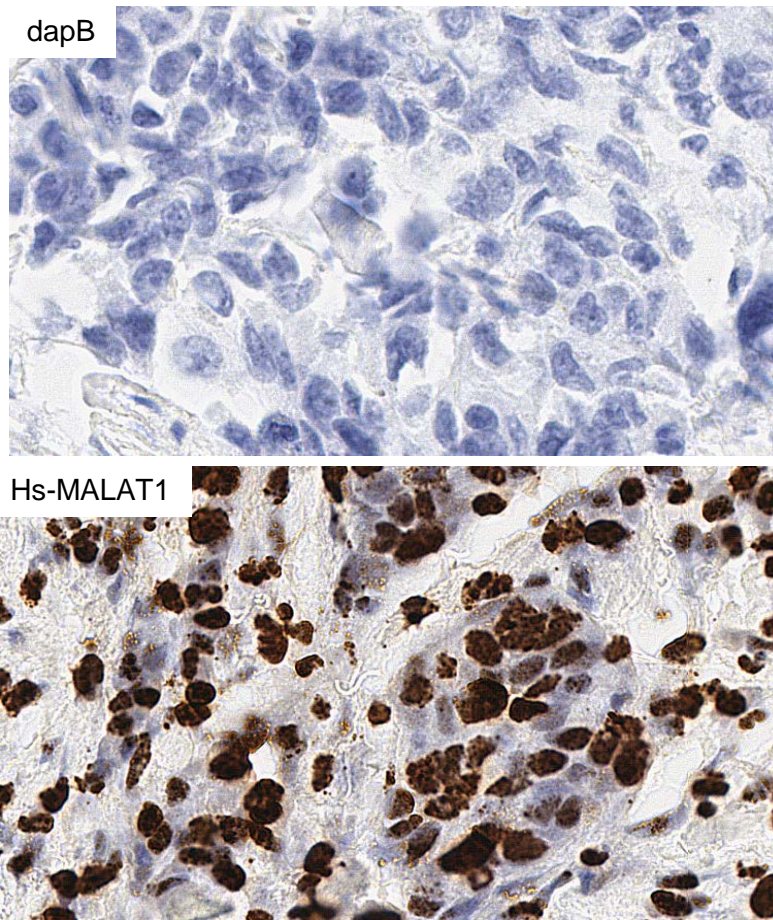
ADVANCED CELL DIAGNOSTICS

## RNASCOPE® PROBE INFORMATION

<b>Catalog number:</b>	400811 (Manual)*, 400819 (2.5 VS assay)*, 400818 (2.5 LS assay)*
<b>Species:</b>	Homo sapiens
<b>Target Gene:</b>	MALAT1
<b>Alternate names:</b>	HCN; NEAT2; PRO2853; mascRNA; LINC00047; NCRNA00047; MALAT1
<b>Entrez Gene ID:</b>	378938
<b>Accession#:</b>	NR_002819.2
<b>Unigene:</b>	Hs.621695
<b>Target Sequence:</b>	Homo sapiens metastasis associated lung adenocarcinoma transcript 1 (non-protein coding) (MALAT1), non-coding RNA
<b>Probe Region:</b>	6820-7930
<b>ZZ pair number:</b>	20

\* Target region is the same across RNAscope® manual and automation assays

## PROBE DATA



RNAscope® Manual Brown Assay performed on FFPE lung cancer tissue under standard condition, using the dapB Negative Control probe (Top; Cat. No. 310043) and Hs-MALAT1 probe (Bottom; Cat. No. 400811), 40X

For more information regarding this target gene: <http://www.ncbi.nlm.nih.gov/gene/378938>

**Note:** ACD always recommends RNA quality verification using control probes, prior to running a target marker. Expression pattern may vary from data shown here based on tissue preparation methods and/or associated sample biology.