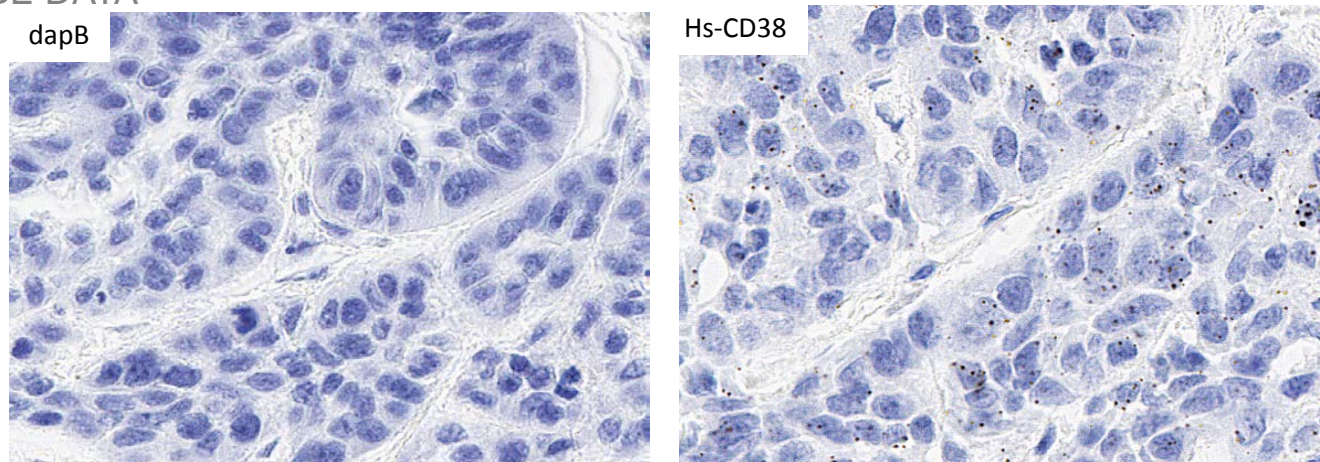


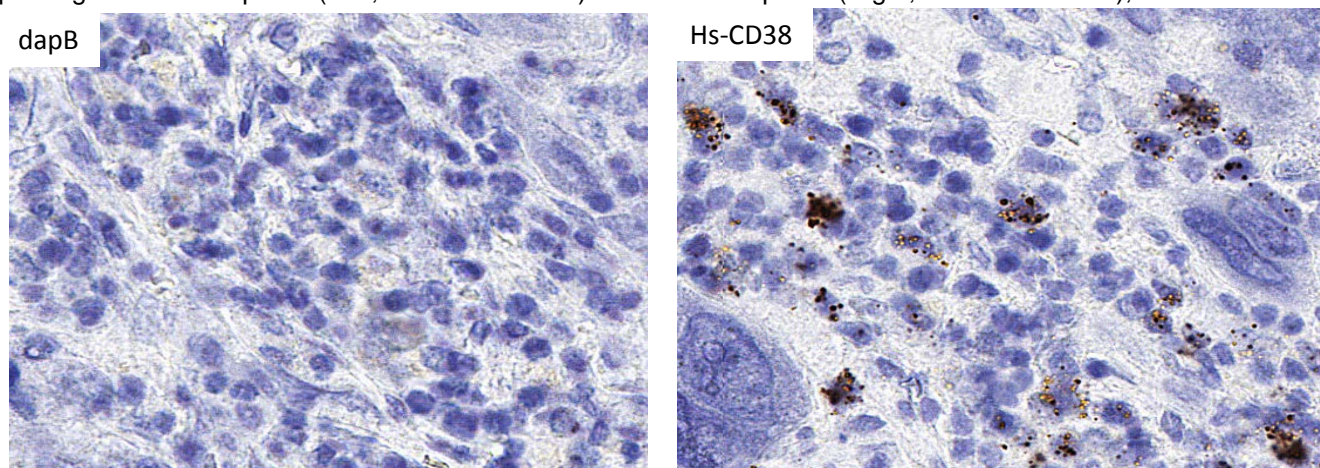
RNASCOPE® PROBE INFORMATION

Catalog number:	555241 (Manual)*, 555249 (2.5 VS assay)*, 555248 (2.5 LS assay)*
Species:	Homo sapiens
Target Gene:	CD38
Alternate names:	CD38; T10
Entrez Gene ID:	952
Accession#:	NM_001775.2
Unigene:	Hs.479214
Target Sequence:	Homo sapiens CD38 molecule (CD38), mRNA
Probe Region:	2-1468
ZZ pair number:	26

* Target region is the same across RNAscope® manual and automation assays

PROBE DATA


RNAscope® Manual Brown Assay performed on FFPE lung cancer tissue under standard condition, using the dapB Negative Control probe (Left; Cat. No. 310043) and Hs-CD38 probe (Right; Cat. No. 555241), 40X



RNAscope® Manual Brown Assay performed on FFPE liver cancer tissue under standard condition, using the dapB Negative Control probe (Left; Cat. No. 310043) and Hs-CD38 probe (Right; Cat. No. 555241), 40X

For more information regarding this target gene: <http://www.ncbi.nlm.nih.gov/gene/952>

Note: ACD always recommends RNA quality verification using control probes, prior to running a target marker.

Expression pattern may vary from data shown here based on tissue preparation methods and/or associated sample biology.