

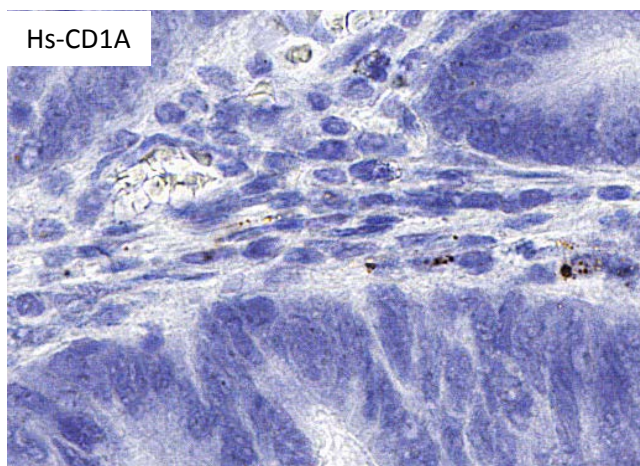
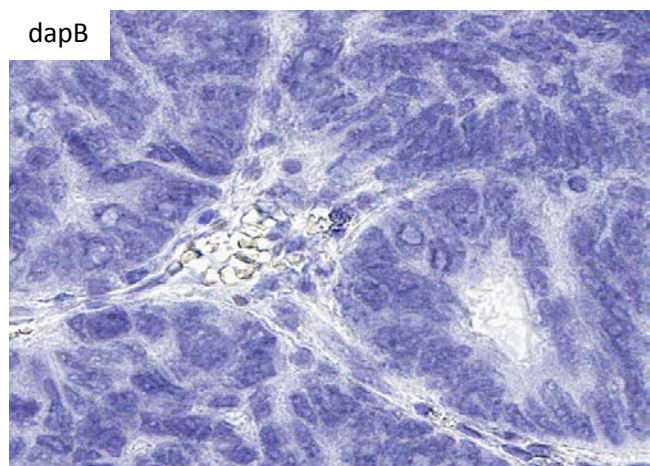
## ADVANCED CELL DIAGNOSTICS

### RNASCOPE® PROBE INFORMATION

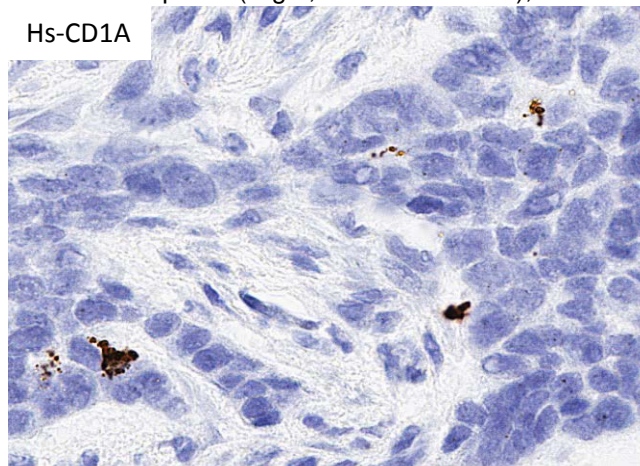
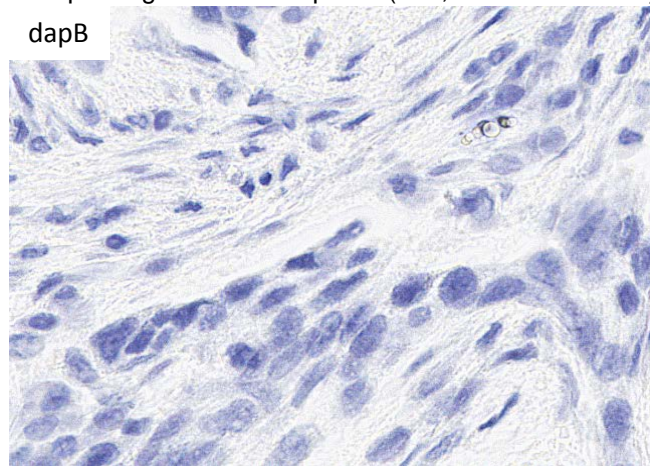
<b>Catalog number:</b>	454071 (Manual)*, 454079 (2.5 VS assay)*, 454078 (2.5 LS assay)*
<b>Species:</b>	Homo sapiens
<b>Target Gene:</b>	CD1A
<b>Alternate names:</b>	R4; T6; CD1; FCB6; HTA1; CD1A
<b>Entrez Gene ID:</b>	909
<b>Accession#:</b>	NM_001763.2
<b>Unigene:</b>	Hs.1309
<b>Target Sequence:</b>	Homo sapiens CD1a molecule (CD1A) mRNA
<b>Probe Region:</b>	2-1008
<b>ZZ pair number:</b>	20

\* Target region is the same across RNAscope® manual and automation assays

### PROBE DATA



RNAscope® Manual Brown Assay performed on FFPE colorectal cancer tissue under standard condition, using the dapB Negative Control probe (Left; Cat. No. 310043) and Hs-CD1A probe (Right; Cat. No. 454071), 40X



RNAscope® Manual Brown Assay performed on FFPE esophageal cancer tissue under standard condition, using the dapB Negative Control probe (Left; Cat. No. 310043) and Hs-CD1A probe (Right; Cat. No. 454071), 40X

For more information regarding this target gene: <http://www.ncbi.nlm.nih.gov/gene/909>

**Note:** ACD always recommends RNA quality verification using control probes, prior to running a target marker.

Expression pattern may vary from data shown here based on tissue preparation methods and/or associated sample biology.