



TARGET PROBE: HS-PAX8

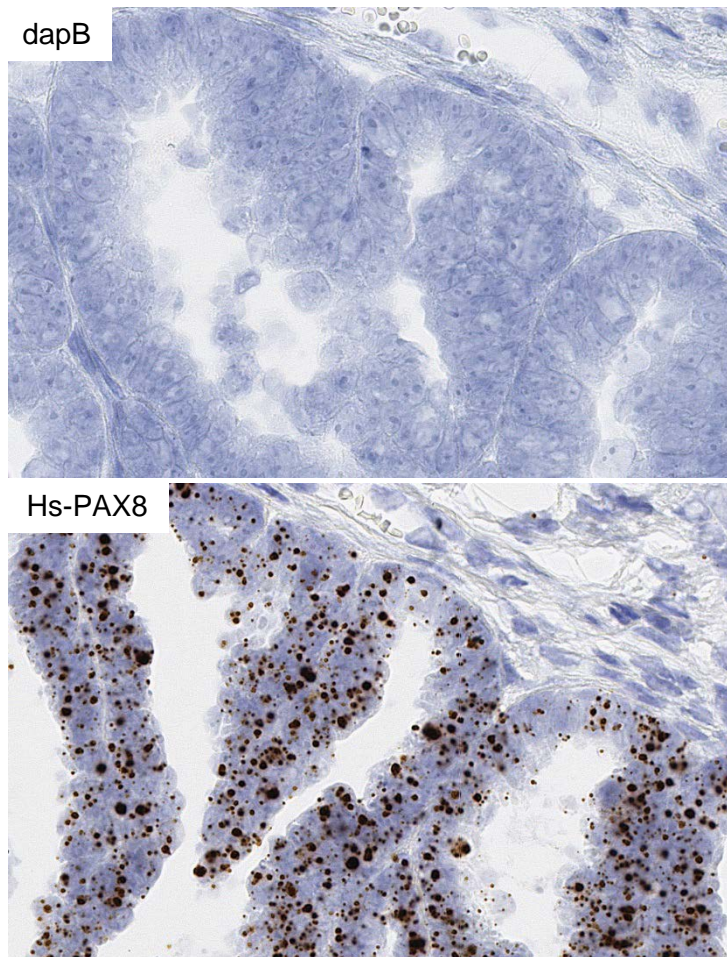
ADVANCED CELL DIAGNOSTICS

RNASCOPE® PROBE INFORMATION

| | |
|-------------------------|--|
| Catalog number: | 402361 (Manual)*, 402369 (2.5 VS assay)*, 402368 (2.5 LS assay)* |
| Species: | Homo sapiens |
| Target Gene: | PAX8 |
| Alternate names: | PAX8 |
| Entrez Gene ID: | 7849 |
| Accession#: | NM_003466.3 |
| Unigene: | Hs.469728 |
| Target Sequence: | Homo sapiens paired box 8 (PAX8), transcript variant PAX8A, mRNA |
| Probe Region: | 2837 - 3909 |
| ZZ pair number: | 20 |

* Target region is the same across RNAscope® manual and automation assays

PROBE DATA



RNAscope® Manual Brown Assay performed on FFPE Ovarian cancer tissue under standard condition, using the dapB Negative Control probe (Top; Cat. No. 310043) and Hs-PAX8 probe (Bottom; Cat. No. 402361), 40X

For more information regarding this target gene: <http://www.ncbi.nlm.nih.gov/gene/7849>

Note: ACD always recommends RNA quality verification using control probes, prior to running a target marker. Expression pattern may vary from data shown here based on tissue preparation methods and/or associated sample biology.