



## TARGET PROBE: HS-CD6

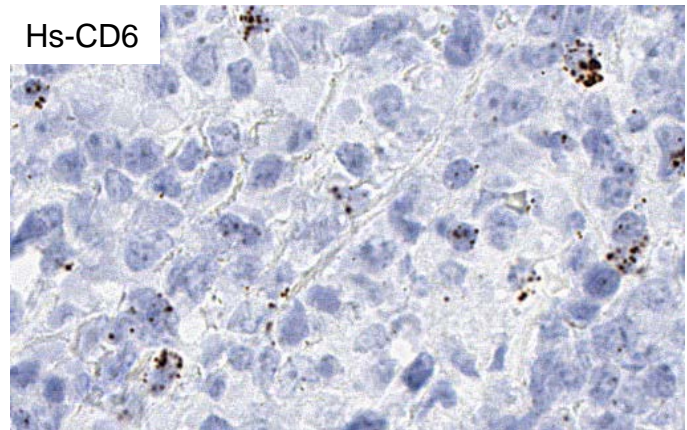
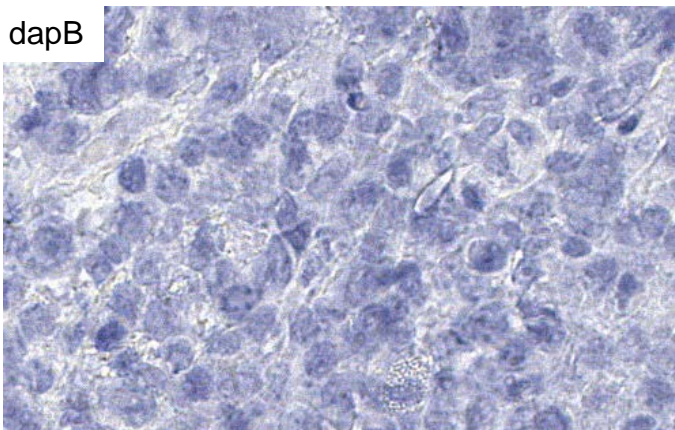
### ADVANCED CELL DIAGNOSTICS

#### RNASCOPE® PROBE INFORMATION

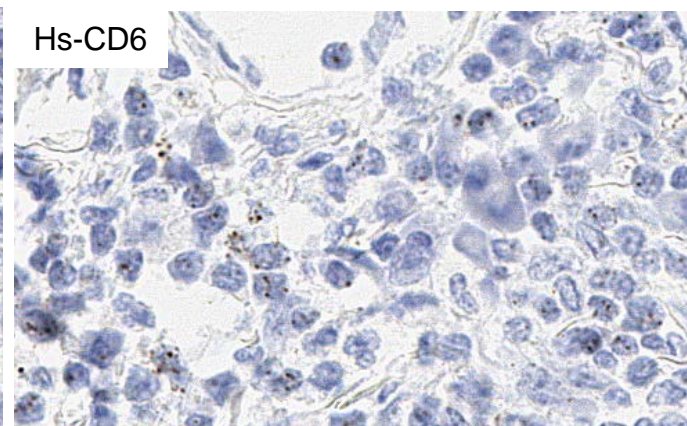
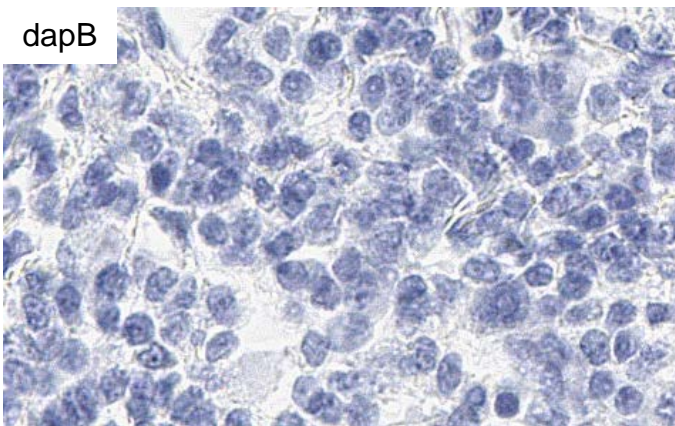
<b>Catalog number:</b>	440741 (Manual)*, 440749 (2.5 VS assay)*, 440748 (2.5 LS assay)*
<b>Species:</b>	Homo sapiens
<b>Target Gene:</b>	CD6
<b>Alternate names:</b>	TP120
<b>Entrez Gene ID:</b>	923
<b>Accession#:</b>	NM_006725.4
<b>Unigene:</b>	Hs.744366
<b>Target Sequence:</b>	Homo sapiens CD6 molecule (CD6) transcript variant 1 mRNA
<b>Probe Region:</b>	1032-2809
<b>ZZ pair number:</b>	20

\* Target region is the same across RNAscope® manual and automation assays

#### PROBE DATA



RNAscope® Manual Brown Assay performed on FFPE lymphoma tissue under standard condition, using the dapB Negative Control probe (Left; Cat. No. 310043) and Hs- probe (Right; Cat. No.440741), 40X.



RNAscope® Manual Brown Assay performed on FFPE gastric cancer tissue under standard condition, using the dapB Negative Control probe (Left; Cat. No. 310043) and Hs-CD6 probe (Right; Cat. No. 440741), 40X.

For more information regarding this target gene: <http://www.ncbi.nlm.nih.gov/gene/923>

**Note:** ACD always recommends RNA quality verification using control probes, prior to running a target marker. Expression pattern may vary from data shown here based on tissue preparation methods and/or associated sample biology.