



ADVANCED CELL DIAGNOSTICS

TARGET PROBE: HS-FGFR1

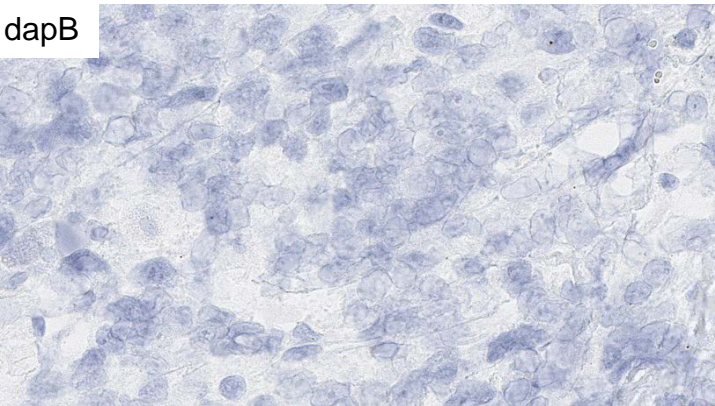
RNASCOPE® PROBE INFORMATION

Catalog number:	310071 (Manual)*, 310079 (2.5 VS assay)*, 310078 (2.5 LS assay)*
Species:	Homo sapiens
Target Gene:	FGFR1
Alternate names:	BFGFR,CD331,CEK,FGFBR,FGFR-1; FGFR1; FLG; FLT-2; FLT2; HBGFR; KAL2; N-SAM; OGD; bFGF-R-1
Entrez Gene ID:	2260
Accession#:	NM_023110
Unigene:	Hs.264887
Target Sequence:	Homo sapiens fibroblast growth factor receptor 1 (FGFR1), transcript variant 1, mRNA
Probe Region:	811-1832
ZZ pair number:	20

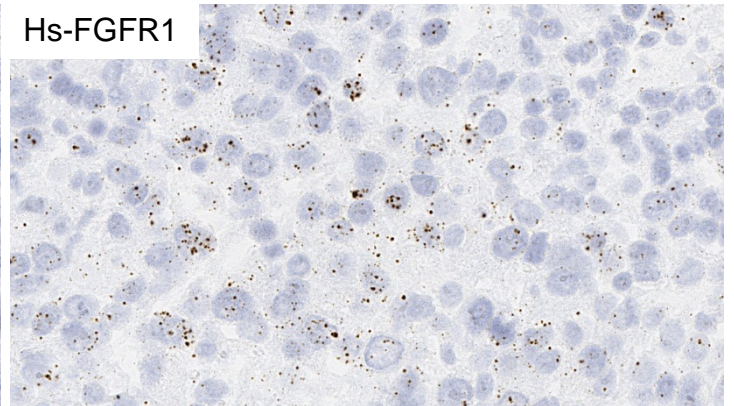
*Target region is the same across RNAScope® manual and automation assays

PROBE DATA

dapB

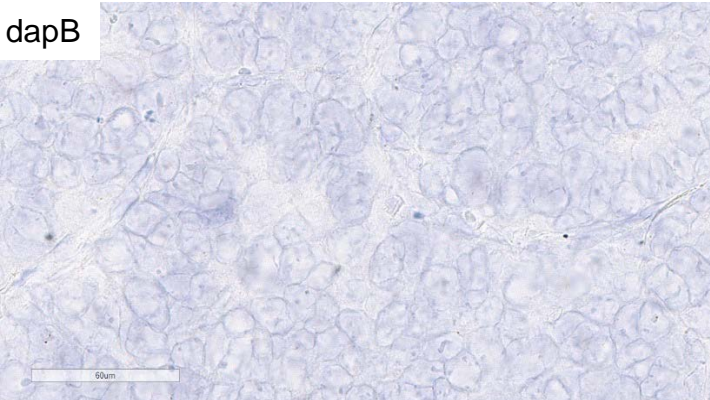


Hs-FGFR1

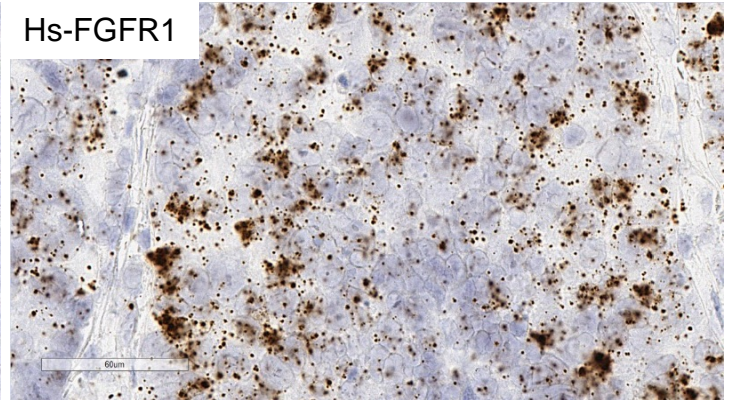


RNAScope® Manual Brown Assay performed on FFPE Breast cancer tissue under standard condition, using the dapB Negative Control probe (Left; Cat. No. 310043) and Hs-FGFR1 probe (Right; Cat. No. 310071), 40X.

dapB



Hs-FGFR1



RNAScope® Manual Brown Assay performed on FFPE Lung cancer tissue under standard condition, using the dapB Negative Control probe (Left; Cat. No. 310043) and Hs-FGFR1 probe (Right; Cat. No. 310071), 40X.

For more information regarding this target gene: <http://www.ncbi.nlm.nih.gov/gene/2260>

Note: ACD always recommends RNA quality verification using control probes, prior to running a target marker. Expression pattern may vary from data shown here based on tissue preparation methods and/or associated sample biology.