



TARGET PROBE: HS-IGL

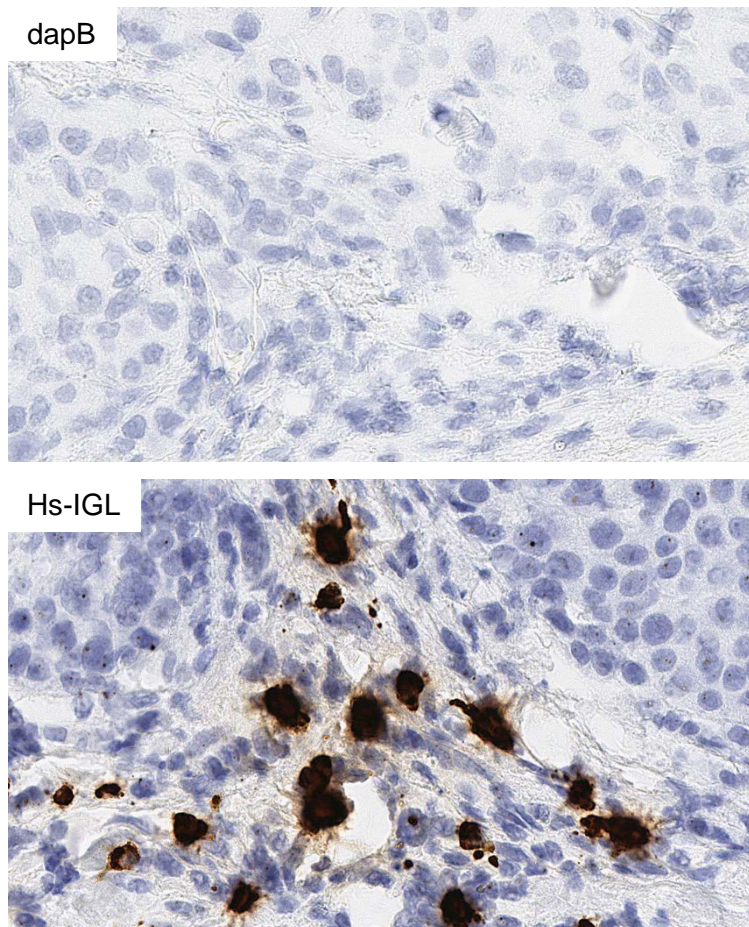
ADVANCED CELL DIAGNOSTICS

RNASCOPE® PROBE INFORMATION

Catalog number:	312561(Manual)*, 312569 (2.5 VS assay)*, 312568 (2.5 LS assay)*
Species:	Homo sapiens
Target Gene:	IGLC1
Alternate names:	IGLC; IGLC1
Entrez Gene ID:	3537
Accession#:	N/A
Unigene:	Hs.449585
Target Sequence:	Immunoglobulin lambda constant region
Probe Region:	gi 528476531:23255447-23255726
ZZ pair number:	7

* Target region is the same across RNAscope® manual and automation assays

PROBE DATA



RNAscope® Manual Brown Assay performed on FFPE Esophageal cancer tissue under standard condition, using the dapB Negative Control probe (Top; Cat. No. 310043) and Hs-IGL probe (Bottom; Cat. No. 312561), 40X

For more information regarding this target gene: <http://www.ncbi.nlm.nih.gov/gene/3537>

Note: ACD always recommends RNA quality verification using control probes, prior to running a target marker. Expression pattern may vary from data shown here based on tissue preparation methods and/or associated sample biology.