



TARGET PROBE: HS-IGK

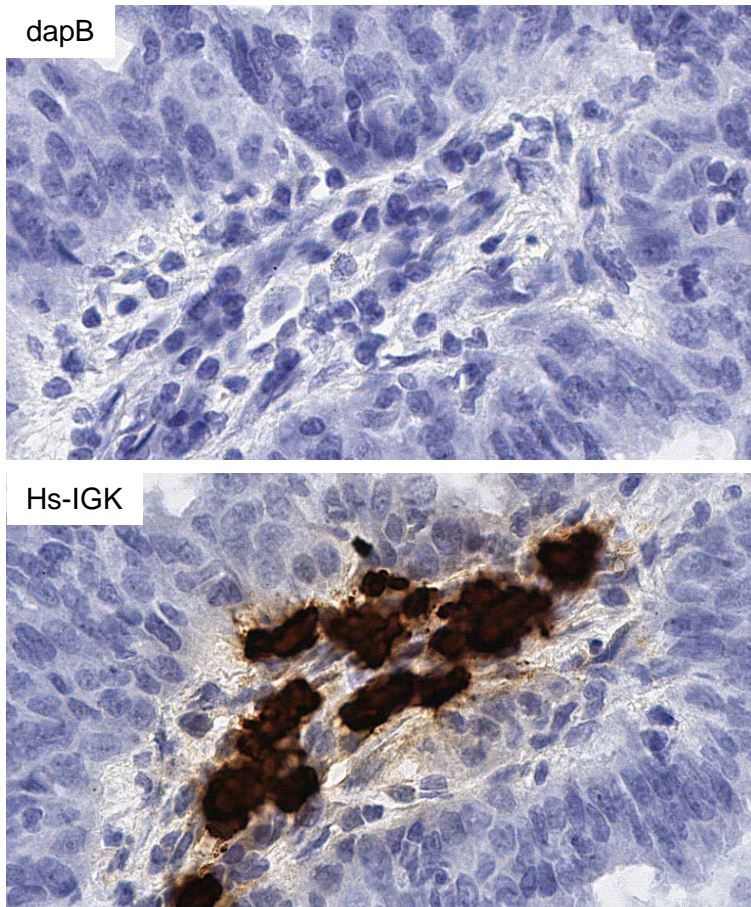
ADVANCED CELL DIAGNOSTICS

RNASCOPE® PROBE INFORMATION

Catalog number:	312551(Manual)*, 312559 (2.5 VS assay)*, 312558 (2.5 LS assay)*
Species:	Homo sapiens
Target Gene:	IGKC
Alternate names:	Km; HCAK1; IGKCD; IGKC
Entrez Gene ID:	3514
Accession#:	N/A
Unigene:	Hs.449609
Target Sequence:	Immunoglobulin kappa locus constant region
Probe Region:	reverse-complement sequence of gi 528476665:89086517-89086775
ZZ pair number:	6

* Target region is the same across RNAscope® manual and automation assays

PROBE DATA



RNAscope® Manual Brown Assay performed on FFPE Ovarian cancer tissue under standard condition, using the dapB Negative Control probe (Top; Cat. No. 310043) and Hs-IGK probe (Bottom; Cat. No. 312551), 40X

For more information regarding this target gene: <http://www.ncbi.nlm.nih.gov/gene/3514>

Note: ACD always recommends RNA quality verification using control probes, prior to running a target marker. Expression pattern may vary from data shown here based on tissue preparation methods and/or associated sample biology.