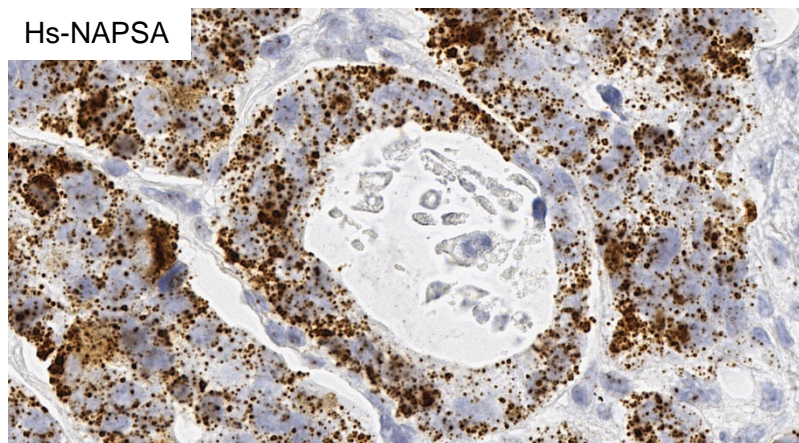
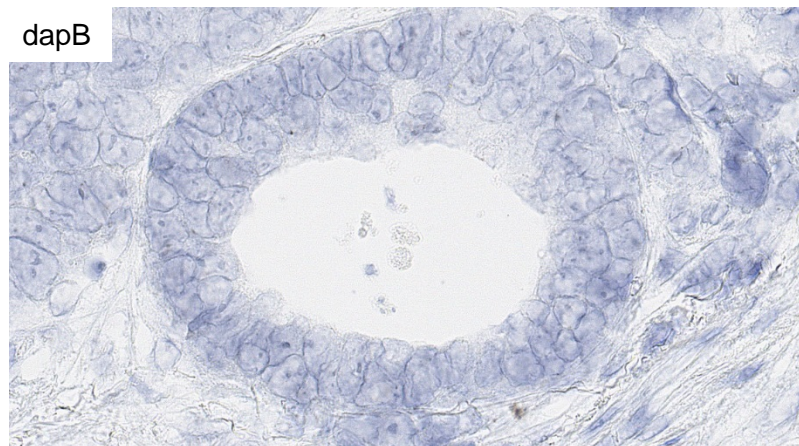


RNASCOPE® PROBE INFORMATION

Catalog number:	405821(Manual)*, 405829 (2.5 VS assay)*, 405828 (2.5 LS assay)*
Species:	Homo sapiens
Target Gene:	NAPSA
Alternate names:	KAP; Kdap; NAP1; NAPA; NAPSA; SNAPA
Entrez Gene ID:	9476
Accession#:	NM_004851.1
Unigene:	Hs.512843
Target Sequence:	Homo sapiens napsin A aspartic peptidase (NAPSA), mRNA
Probe Region:	2-895
ZZ pair number:	20

* Target region is the same across RNAscope® manual and automation assays

PROBE DATA



RNAscope® Manual Brown Assay performed on FFPE lung cancer tissue under standard condition, using the dapB Negative Control probe (Top; Cat. No. 310043) and Hs-NAPSA probe (Bottom; Cat. No. 405821), 40X

For more information regarding this target gene: <http://www.ncbi.nlm.nih.gov/gene/9476>

Note: ACD always recommends RNA quality verification using control probes, prior to running a target marker. Expression pattern may vary from data shown here based on tissue preparation methods and/or associated sample biology.