



TARGET PROBE: HS-EBI3

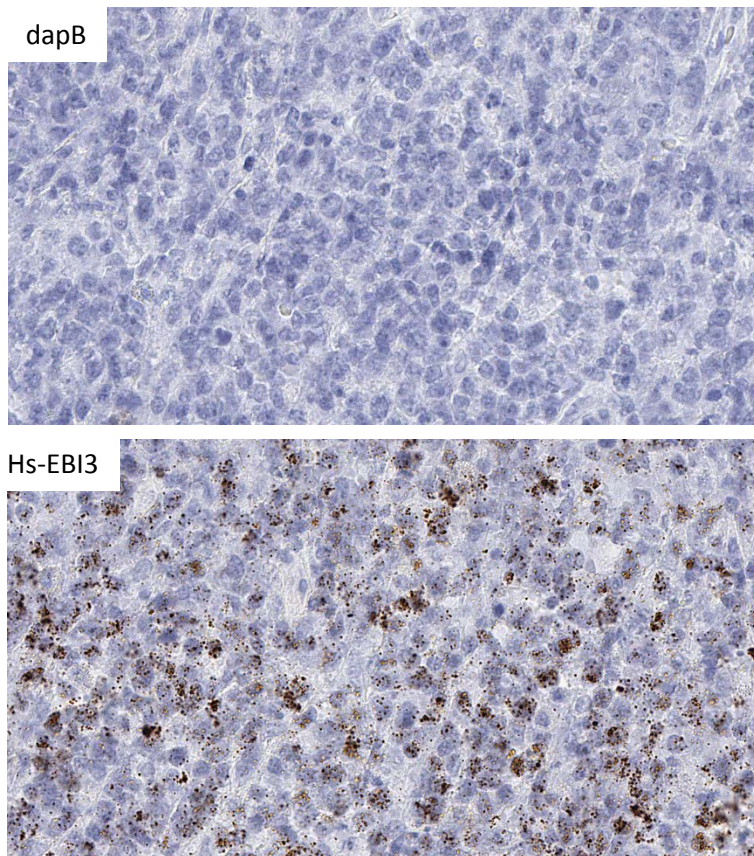
ADVANCED CELL DIAGNOSTICS

RNASCOPE® PROBE INFORMATION

Catalog number:	447261 (Manual)*, 447269 (2.5 VS assay)*, 447268 (2.5 LS assay)*
Species:	Homo sapiens
Target Gene:	EBI3
Alternate names:	IL27B; IL-27B
Entrez Gene ID:	10148
Accession#:	NM_005755.2
Unigene:	Hs.501452
Target Sequence:	Homo sapiens Epstein-Barr virus induced 3 (EBI3) mRNA
Probe Region:	19-986
ZZ pair number:	18

* Target region is the same across RNAscope® manual and automation assays

PROBE DATA



RNAscope® Manual Brown Assay performed on FFPE lymphoma tissue under standard condition, using the dapB Negative Control probe (Top; Cat. No. 310043) and Hs-EBI3 probe (Bottom; Cat. No. 447261), 40X

For more information regarding this target gene: <http://www.ncbi.nlm.nih.gov/gene/10148>

Note: ACD always recommends RNA quality verification using control probes, prior to running a target marker.

Expression pattern may vary from data shown here based on tissue preparation methods and/or associated sample biology.