



TARGET PROBE: HS-CSF3

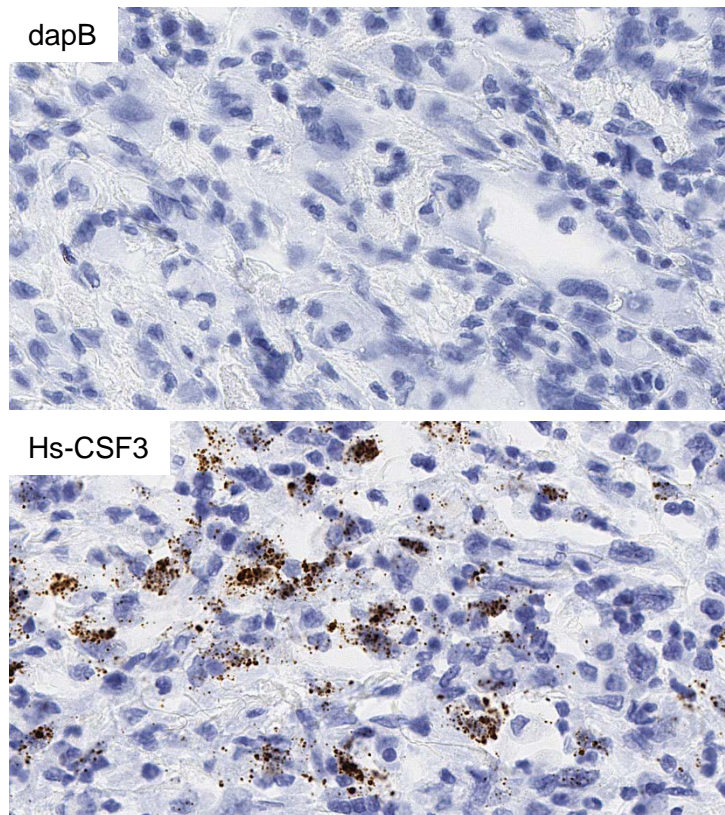
ADVANCED CELL DIAGNOSTICS

RNASCOPE® PROBE INFORMATION

Catalog number:	425301 (Manual)*, 425309 (2.5 VS assay)*, 425308 (2.5 LS assay)*
Species:	Homo sapiens
Target Gene:	CSF3
Alternate names:	GCSF; CSF3OS; C17orf33
Entrez Gene ID:	1440
Accession#:	NM_172220.2
Unigene:	Hs.2233
Target Sequence:	Homo sapiens colony stimulating factor 3 (granulocyte) (CSF3) transcript variant 3 mRNA
Probe Region:	98-1485
ZZ pair number:	20

* Target region is the same across RNAscope® manual and automation assays

PROBE DATA



RNAscope® Manual Brown Assay performed on FFPE bladder cancer tissue under standard condition, using the dapB Negative Control probe (Top; Cat. No. 310043) and Hs-CSF3 probe (Bottom; Cat. No. 425301), 40X

For more information regarding this target gene: <http://www.ncbi.nlm.nih.gov/gene/1440>

Note: ACD always recommends RNA quality verification using control probes, prior to running a target marker.

Expression pattern may vary from data shown here based on tissue preparation methods and/or associated sample biology.