



TARGET PROBE: HS-CCND1

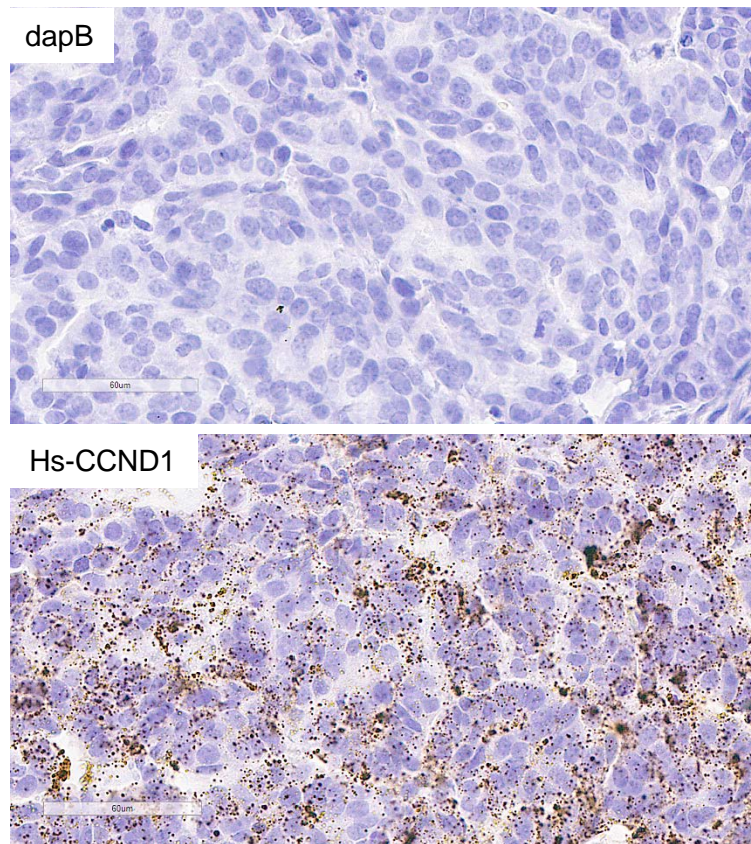
ADVANCED CELL DIAGNOSTICS

RNASCOPE® PROBE INFORMATION

Catalog number:	591821 (Manual)*, 591829 (2.5 VS assay)*, 591828 (2.5 LS assay)*
Species:	Homo sapiens
Target Gene:	CCND1
Alternate names:	BCL1; CCND1; PRAD1; U21B31; D11S287E
Entrez Gene ID:	595
Accession#:	NM_053056.2
Unigene:	Hs.523852
Target Sequence:	Homo sapiens cyclin D1 (CCND1), mRNA
Probe Region:	1587-2584
ZZ pair number:	20

* Target region is the same across RNAScope® manual and automation assays

PROBE DATA



RNAScope® Manual Brown Assay performed on FFPE ovarian cancer tissue under standard condition, using the dapB Negative Control probe (Top; Cat. No. 310043) and Hs-CCND1 probe (Bottom; Cat. No. 591821), 40X

For more information regarding this target gene: <http://www.ncbi.nlm.nih.gov/gene/595>

Note: ACD always recommends RNA quality verification using control probes, prior to running a target marker.

Expression pattern may vary from data shown here based on tissue preparation methods and/or associated sample biology.