



ADVANCED CELL DIAGNOSTICS

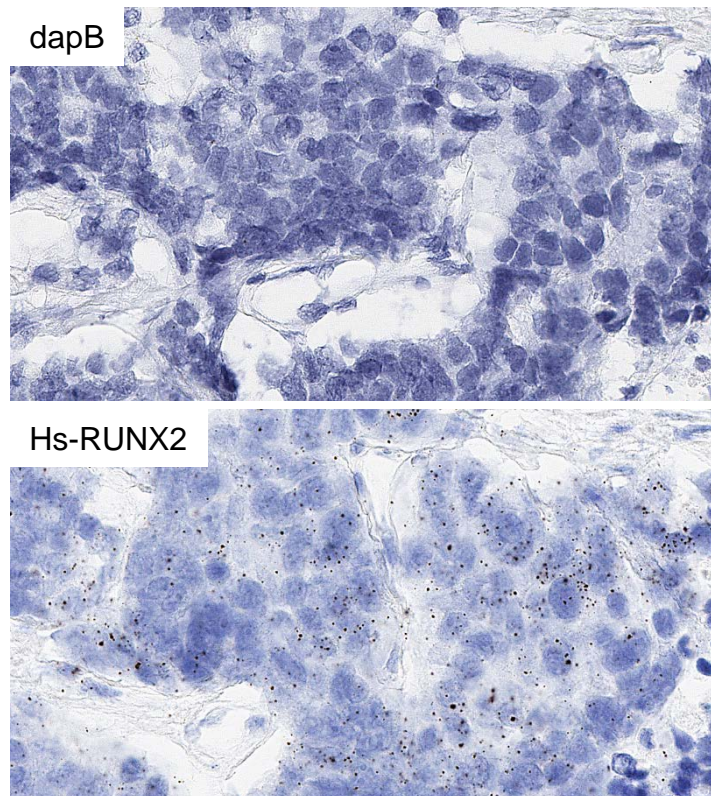
TARGET PROBE: HS-RUNX2

RNASCOPE® PROBE INFORMATION

Catalog number:	440071 (Manual)*, 440079 (2.5 VS assay)*, 440078 (2.5 LS assay)*
Species:	Homo sapiens
Target Gene:	RUNX2
Alternate names:	CCD; AML3; CCD1; CLCD; OSF2; CBFA1; OSF-2; PEA2aA; PEBP2aA; CBF-alpha-1
Entrez Gene ID:	860
Accession#:	NM_001024630.3
Unigene:	Hs.535845
Target Sequence:	Homo sapiens runt-related transcription factor 2 (RUNX2) transcript variant 1 mRNA
Probe Region:	606 - 1502
ZZ pair number:	20

* Target region is the same across RNAscope® manual and automation assays

PROBE DATA



RNAscope® Manual Brown Assay performed on FFPE bladder cancer tissue under standard condition, using the dapB Negative Control probe (Top; Cat. No. 310043) and Hs-RUNX2 probe (Bottom; Cat. No. 440071), 40X

For more information regarding this target gene: <http://www.ncbi.nlm.nih.gov/gene/860>

Note: ACD always recommends RNA quality verification using control probes, prior to running a target marker. Expression pattern may vary from data shown here based on tissue preparation methods and/or associated sample biology.