



# TARGET PROBE: HS-AKT3

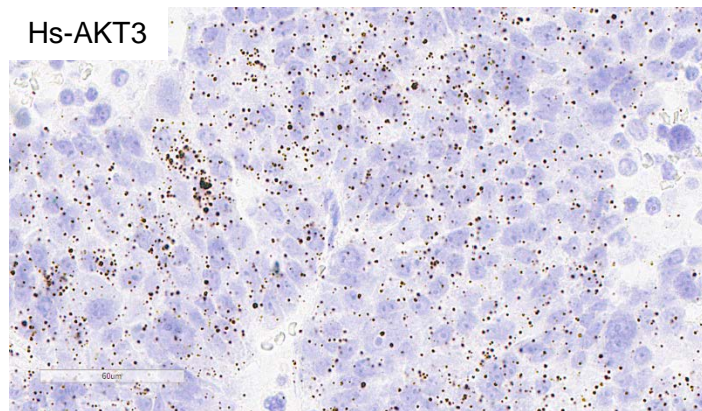
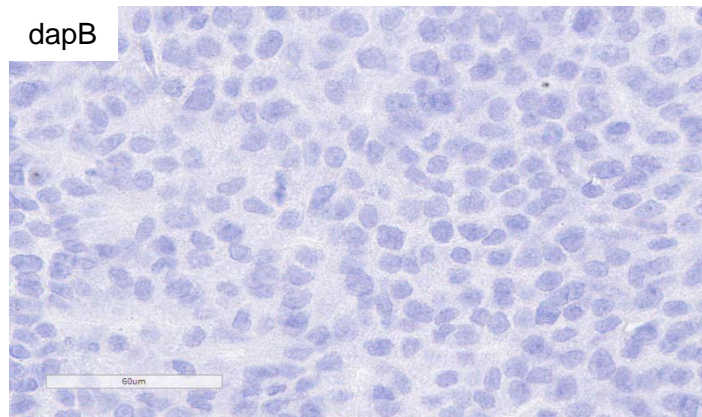
ADVANCED CELL DIAGNOSTICS

## RNASCOPE® PROBE INFORMATION

<b>Catalog number:</b>	434211 (Manual)*, 434219 (2.5 VS assay)*, 434218 (2.5 LS assay)*
<b>Species:</b>	Homo sapiens
<b>Target Gene:</b>	AKT3
<b>Alternate names:</b>	MPPH; PKBG; MPPH2; PRKBG; STK-2; PKB-GAMMA; RAC-gamma; RAC-PK-gamma
<b>Entrez Gene ID:</b>	10000
<b>Accession#:</b>	NM_005465.4
<b>Unigene:</b>	Hs.498292
<b>Target Sequence:</b>	Homo sapiens v-akt murine thymoma viral oncogene homolog 3 (AKT3) transcript variant 1 mRNA
<b>Probe Region:</b>	45-1306
<b>ZZ pair number:</b>	20

\* Target region is the same across RNAscope® manual and automation assays

## PROBE DATA



RNAscope® Manual Brown Assay performed on FFPE liver cancer tissue under standard condition, using the dapB Negative Control probe (Top; Cat. No. 310043) and Hs-AKT3 probe (Bottom; Cat. No. 434211), 40X

For more information regarding this target gene: <http://www.ncbi.nlm.nih.gov/gene/10000>

**Note:** ACD always recommends RNA quality verification using control probes, prior to running a target marker. Expression pattern may vary from data shown here based on tissue preparation methods and/or associated sample biology.