



ADVANCED CELL DIAGNOSTICS

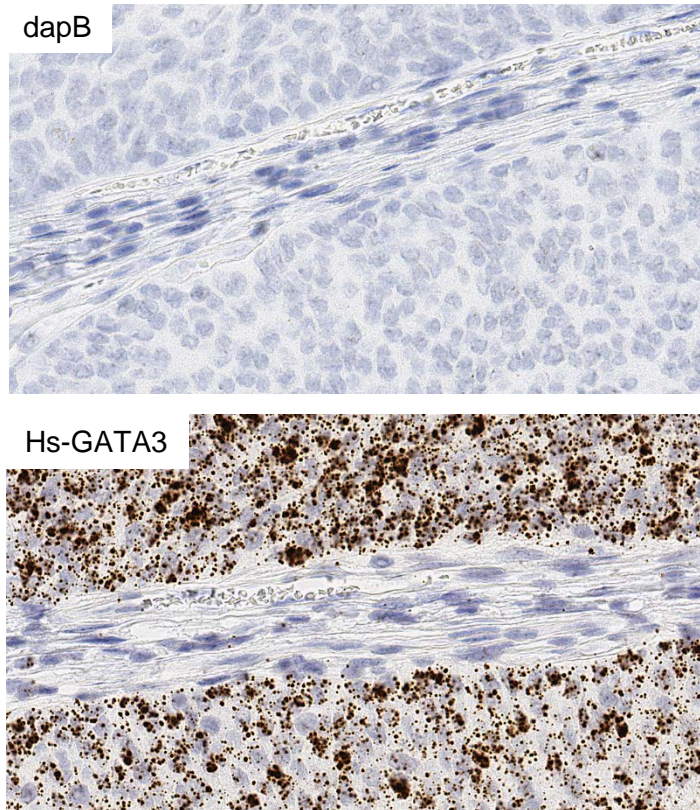
## TARGET PROBE: HS-GATA3

### RNASCOPE® PROBE INFORMATION

<b>Catalog number:</b>	403551 (Manual)*, 403559 (2.5 VS assay)*, 403558 (2.5 LS assay)*
<b>Species:</b>	Homo sapiens
<b>Target Gene:</b>	GATA3
<b>Alternate names:</b>	GATA3; HDR; HDRS
<b>Entrez Gene ID:</b>	2625
<b>Accession#:</b>	NM_001002295.1
<b>Unigene:</b>	Hs.524134
<b>Target Sequence:</b>	Homo sapiens GATA binding protein 3 (GATA3), transcript variant 1, mRNA
<b>Probe Region:</b>	1443-2619
<b>ZZ pair number:</b>	20

\* Target region is the same across RNAscope® manual and automation assays

### PROBE DATA



RNAscope® Manual Brown Assay performed on FFPE bladder cancer tissue under standard condition, using the dapB Negative Control probe (Top; Cat. No. 310043) and Hs-GATA3 probe (Bottom; Cat. No. 403551), 40X

For more information regarding this target gene: <http://www.ncbi.nlm.nih.gov/gene/2625>

**Note:** ACD always recommends RNA quality verification using control probes, prior to running a target marker.

Expression pattern may vary from data shown here based on tissue preparation methods and/or associated sample biology.