



ADVANCED CELL DIAGNOSTICS

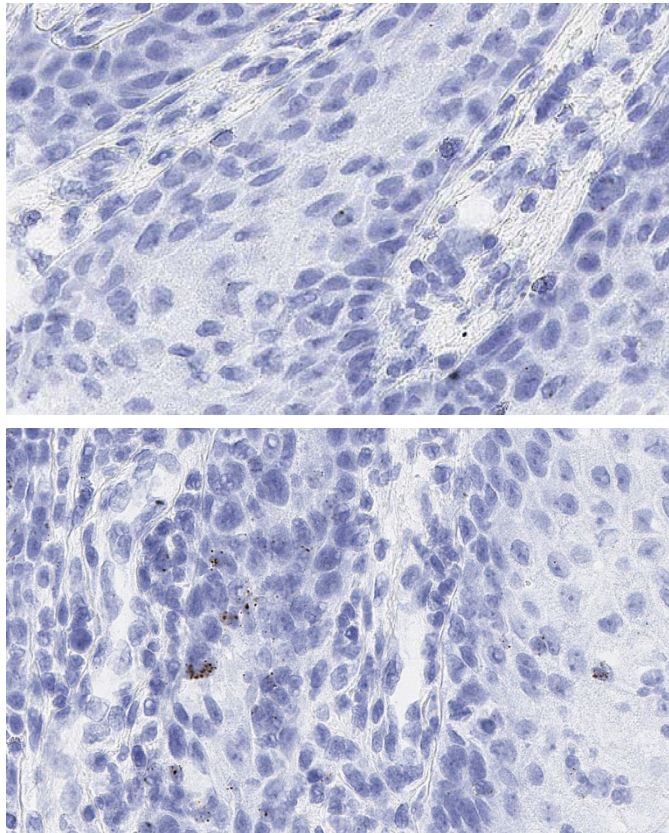
TARGET PROBE: HS-IFNG

RNASCOPE® PROBE INFORMATION

Catalog number:	310501 (Manual)*, 310506 (VS assay)*, 310507 (LS assay)* 310509 (2.5 VS assay)*, 310508 (2.5 LS assay)*
Species:	Homo sapiens
Target Gene:	IFNG
Alternate names:	IFG; IFI
Entrez Gene ID:	3458
Accession#:	NM_000619
Unigene:	Hs.856
Target Sequence:	Homo sapiens interferon, gamma (IFNG), mRNA
Probe Region:	80 - 1152
ZZ pair number:	20

* Target region is the same across manual and automation

PROBE DATA



RNAScope® Manual Brown Assay performed on FFPE vulvar cancer tissue under standard condition, using the dapB Negative Control probe (Top; Cat. No. 310043) and Hs-IFNG probe (Bottom; Cat. No. 310501), 40X

For more information regarding this target gene: <http://www.ncbi.nlm.nih.gov/gene/3458>

Note: ACD always recommends RNA quality verification using control probes, prior to running a target marker. Expression pattern may vary from data shown here based on tissue preparation methods and/or associated sample biology.