



ADVANCED CELL DIAGNOSTICS

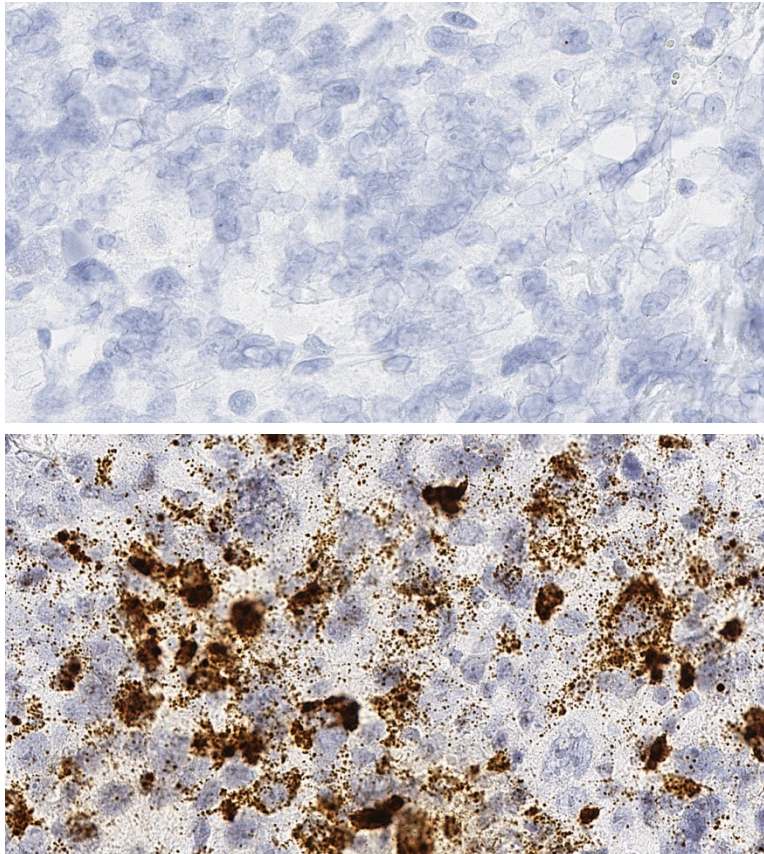
TARGET PROBE: HS-CXCL10

RNASCOPE® PROBE INFORMATION

Catalog number:	311851 (Manual)*, 311856 (VS assay)*, 311857 (LS assay)* 311859 (2.5 VS assay)*, 311858 (2.5 LS assay)*
Species:	Homo sapiens
Target Gene:	CXCL10
Alternate names:	C7; IFI10; INP10; IP-10; crg-2; mob-1; SCYB10; gIP-10
Entrez Gene ID:	3627
Accession#:	NM_001565
Unigene:	Hs.632586
Target Sequence:	Homo sapiens chemokine (C-X-C motif) ligand 10 (CXCL10), mRNA
Probe Region:	2 - 1115
ZZ pair number:	19

* Target region is the same across manual and automation

PROBE DATA



RNAscope® Manual Brown Assay performed on FFPE breast cancer tissue under standard condition, using the dapB Negative Control probe (Top; Cat. No. 310043) and Hs-CXCL10 probe (Bottom; Cat. No. 311851), 40X

For more information regarding this target gene: <http://www.ncbi.nlm.nih.gov/gene/3627>

Note: ACD always recommends RNA quality verification using control probes, prior to running a target marker. Expression pattern may vary from data shown here based on tissue preparation methods and/or associated sample biology.