



TARGET PROBE: HS-CD40LG

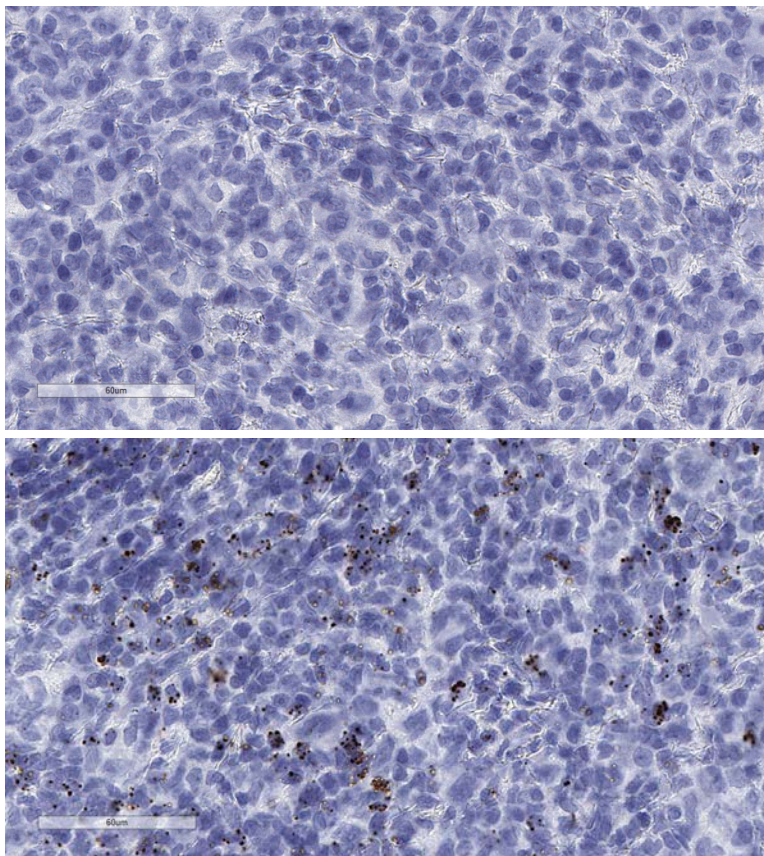
ADVANCED CELL DIAGNOSTICS

RNASCOPE® PROBE INFORMATION

Catalog number:	542341 (Manual)*, 542346 (VS assay)*, 542347 (LS assay)* 542349 (2.5 VS assay)*, 542348 (2.5 LS assay)*
Species:	Homo sapiens
Target Gene:	CD40LG
Alternate names:	IGM; IMD3; TRAP; gp39; CD154; CD40L; HIGM1; T-BAM; TNFSF5; hCD40L
Entrez Gene ID:	959
Accession#:	NM_000074.2
Unigene:	Hs.592244
Target Sequence:	Homo sapiens CD40 ligand (CD40LG), mRNA
Probe Region:	262 - 1227
ZZ pair number:	20

* Target region is the same across manual and automation

PROBE DATA



RNAScope® Manual Brown Assay performed on FFPE lymphoma tissue under standard condition, using the dapB Negative Control probe (Top; Cat. No. 310043) and Hs-CD40LG probe (Bottom Cat. No. 542341), 40X

For more information regarding this target gene: <http://www.ncbi.nlm.nih.gov/gene/959>

Note: ACD always recommends RNA quality verification using control probes, prior to running a target marker. Expression pattern may vary from data shown here based on tissue preparation methods and/or associated sample biology.