



TARGET PROBE: HS-CD27

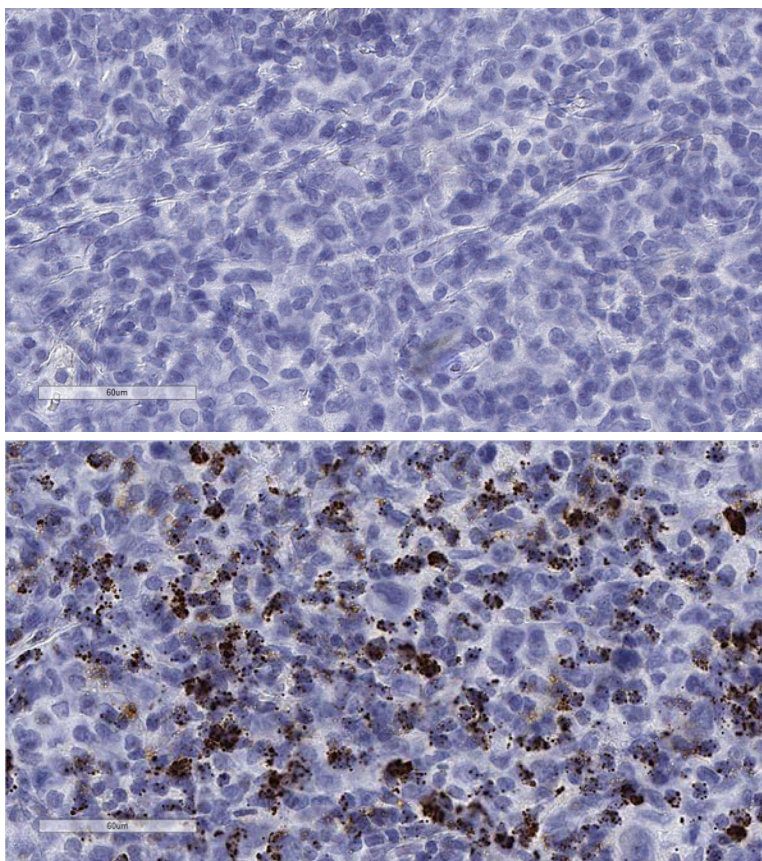
ADVANCED CELL DIAGNOSTICS

RNASCOPE® PROBE INFORMATION

Catalog number:	415451 (Manual)*, 415456 (VS assay)*, 415457 (LS assay)* 415459 (2.5 VS assay)*, 415458 (2.5 LS assay)*
Species:	Homo sapiens
Target Gene:	CD27
Alternate names:	T14; S152; Tp55; TNFRSF7; S152. LPFS2
Entrez Gene ID:	939
Accession#:	NM_001242.4
Unigene:	Hs.355307
Target Sequence:	Homo sapiens CD27 molecule (CD27) mRNA
Probe Region:	27 - 1319
ZZ pair number:	20

* Target region is the same across manual and automation

PROBE DATA



RNAscope® Manual Brown Assay performed on FFPE lymphoma tissue under standard condition, using the dapB Negative Control probe (Top; Cat. No. 310043) and Hs-CD27 probe (Bottom; Cat. No. 415451), 40X

For more information regarding this target gene: <http://www.ncbi.nlm.nih.gov/gene/939>

Note: ACD always recommends RNA quality verification using control probes, prior to running a target marker. Expression pattern may vary from data shown here based on tissue preparation methods and/or associated sample biology.