



TARGET PROBE: HS-LAG3

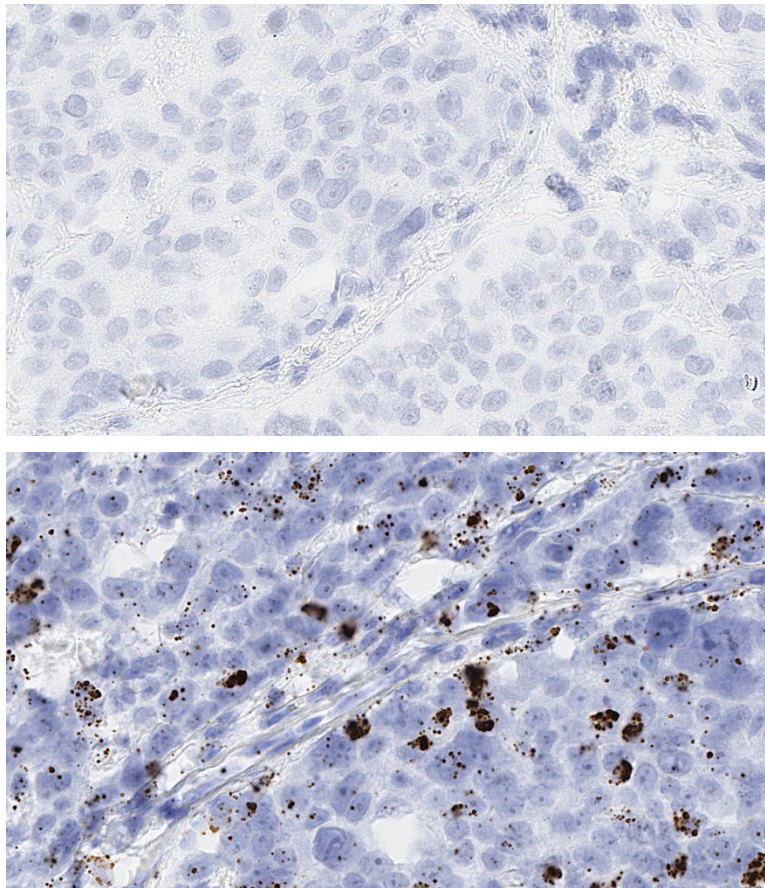
ADVANCED CELL DIAGNOSTICS

RNASCOPE® PROBE INFORMATION

Catalog number:	553931 (Manual)*, 553936 (VS assay)*, 553937 (LS assay)* 553939 (2.5 VS assay)*, 553938 (2.5 LS assay)*
Species:	Homo sapiens
Target Gene:	LAG3
Alternate names:	CD223
Entrez Gene ID:	3902
Accession#:	NM_002286.5
Unigene:	Hs.409523
Target Sequence:	Homo sapiens lymphocyte-activation gene 3 (LAG3), mRNA
Probe Region:	643 - 1846
ZZ pair number:	20

* Target region is the same across manual and automation

PROBE DATA



RNAscope® Manual Brown Assay performed on FFPE esophageal cancer tissue under standard condition, using the dapB Negative Control probe (Top; Cat. No. 310043) and Hs-LAG3 probe (Bottom; Cat. No. 553931), 40X

For more information regarding this target gene: <http://www.ncbi.nlm.nih.gov/gene/3902>

Note: ACD always recommends RNA quality verification using control probes, prior to running a target marker. Expression pattern may vary from data shown here based on tissue preparation methods and/or associated sample biology.