

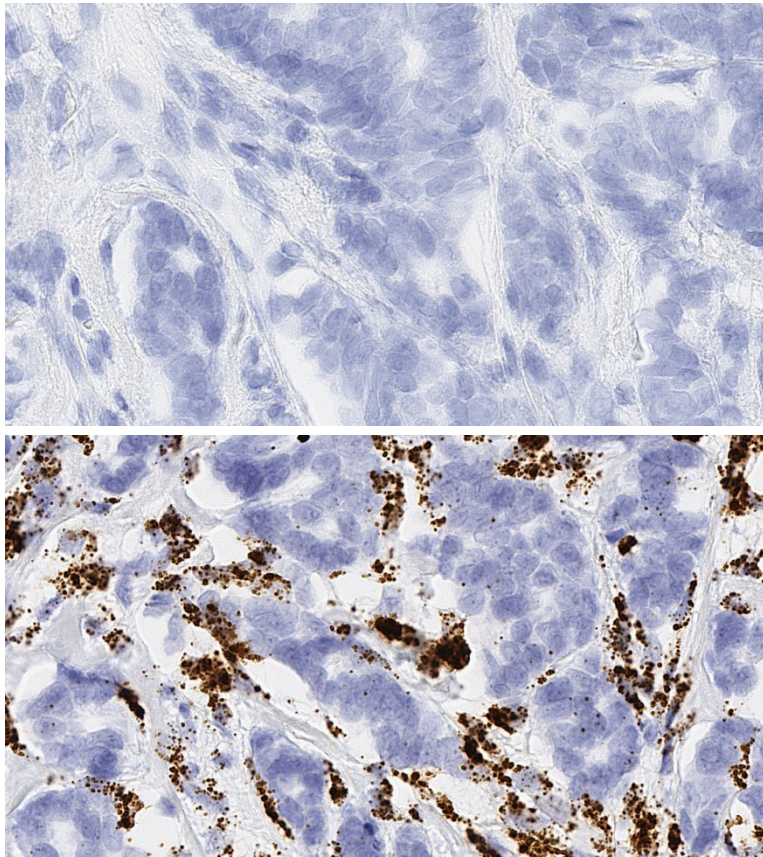
ADVANCED CELL DIAGNOSTICS

RNASCOPE® PROBE INFORMATION

Catalog number:	311341 (Manual)*, 311346 (VS assay)*, 311347 (LS assay)* 311349 (2.5 VS assay)*, 311348 (2.5 LS assay)*
Species:	Homo sapiens
Target Gene:	LOXL2
Alternate names:	LOR2; WS9-14
Entrez Gene ID:	4017
Accession#:	NM_002318.2
Unigene:	Hs.626637
Target Sequence:	Homo sapiens lysyl oxidase-like 2 (LOXL2), mRNA
Probe Region:	2303-3489
ZZ pair number:	20

* Target region is the same across manual and automation

PROBE DATA



RNAscope® Manual Brown Assay performed on FFPE breast cancer tissue under standard condition, using the dapB Negative Control probe (Top; Cat. No. 310043) and Hs-LOXL2 probe (Bottom; Cat. No. 311341), 40X

For more information regarding this target gene: <http://www.ncbi.nlm.nih.gov/gene/4017>

Note: ACD always recommends RNA quality verification using control probes, prior to running a target marker. Expression pattern may vary from data shown here based on tissue preparation methods and/or associated sample biology.