



## TARGET PROBE: HS-KRT19

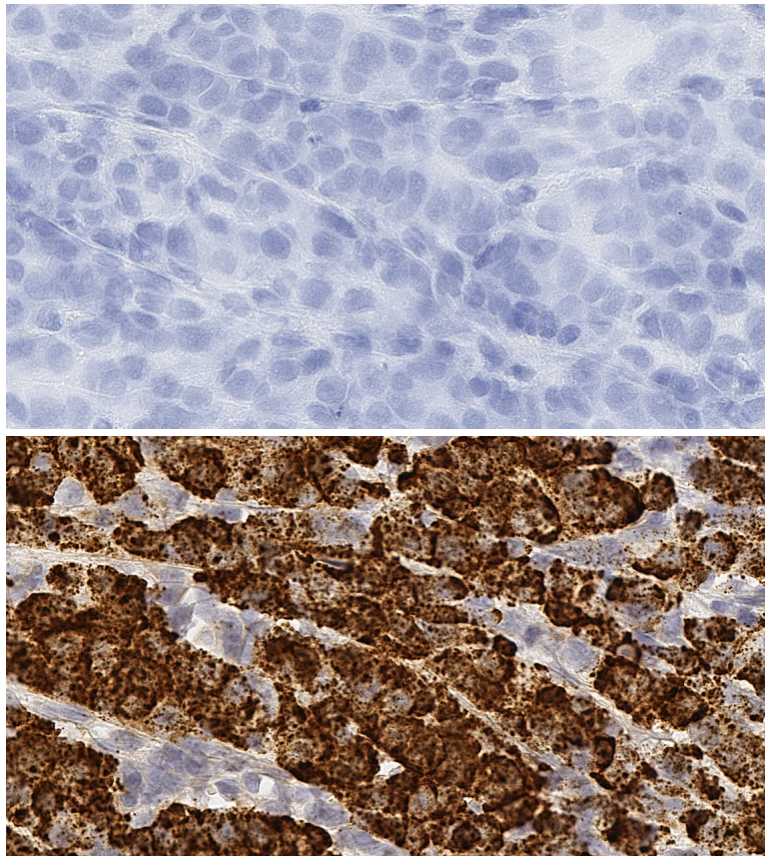
### ADVANCED CELL DIAGNOSTICS

#### RNASCOPE® PROBE INFORMATION

<b>Catalog number:</b>	310221(Manual)*, 310226 (VS assay)*, 310227 (LS assay)* 310229 (2.5 VS assay)*, 310228 (2.5 LS assay)*
<b>Species:</b>	Homo sapiens
<b>Target Gene:</b>	KRT19
<b>Alternate names:</b>	K19; CK19; K1CS
<b>Entrez Gene ID:</b>	3880
<b>Accession#:</b>	NM_002276
<b>Unigene:</b>	Hs.654568
<b>Target Sequence:</b>	Homo sapiens keratin 19 (KRT19), mRNA
<b>Probe Region:</b>	656-1401
<b>ZZ pair number:</b>	15

\* Target region is the same across manual and automation

#### PROBE DATA



RNAscope® Manual Brown Assay performed on FFPE gastric cancer tissue under standard condition, using the dapB Negative Control probe (Top; Cat. No. 310043) and Hs-KRT19 probe (Bottom; Cat. No. 310221), 40X

For more information regarding this target gene: <http://www.ncbi.nlm.nih.gov/gene/3880>

**Note:** ACD always recommends RNA quality verification using control probes, prior to running a target marker. Expression pattern may vary from data shown here based on tissue preparation methods and/or associated sample biology.