

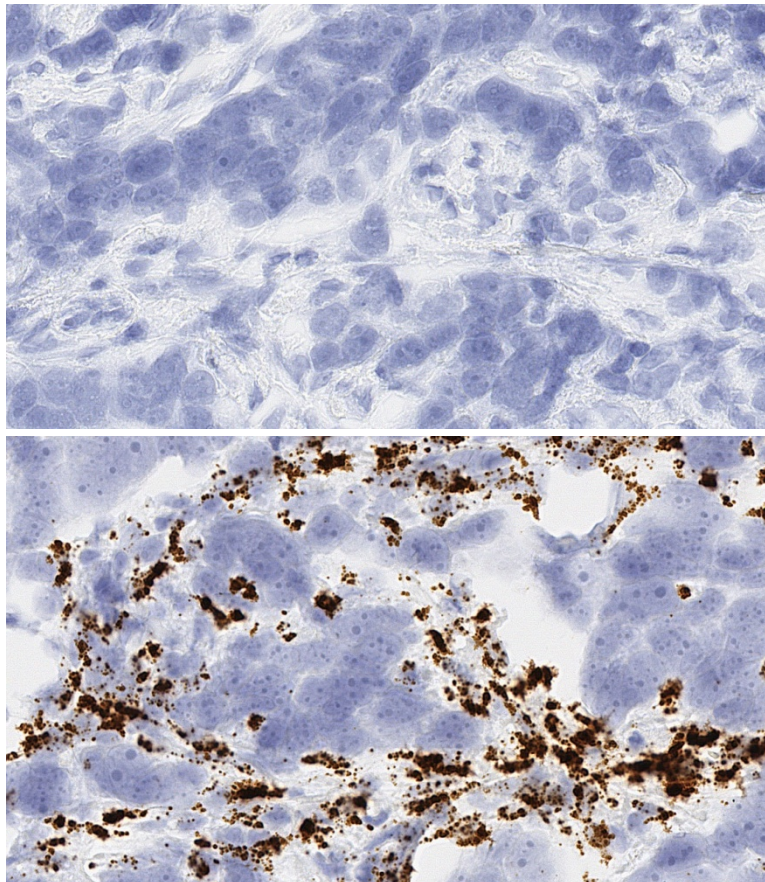
ADVANCED CELL DIAGNOSTICS

RNASCOPE® PROBE INFORMATION

<b>Catalog number:</b>	560621 (Manual)*, 560626 (VS assay)*, 560627 (LS assay)* 560629 (2.5 VS assay)*, 560628 (2.5 LS assay)*
<b>Species:</b>	Homo sapiens
<b>Target Gene:</b>	HTRA1
<b>Alternate names:</b>	L56; HltrA; ARMD7; ORF480; PRSS11; CARASIL
<b>Entrez Gene ID:</b>	5654
<b>Accession#:</b>	NM_002775.4
<b>Unigene:</b>	Hs.501280
<b>Target Sequence:</b>	Homo sapiens HtrA serine peptidase 1 (HTRA1), mRNA
<b>Probe Region:</b>	1106-2087
<b>ZZ pair number:</b>	20

\* Target region is the same across manual and automation

PROBE DATA



RNAScope® Manual Brown Assay performed on FFPE ovarian cancer tissue under standard condition, using the dapB Negative Control probe (Top; Cat. No. 310043) and Hs-HTRA1 probe (Bottom; Cat. No. 560621), 40X

For more information regarding this target gene: <http://www.ncbi.nlm.nih.gov/gene/5654>

**Note:** ACD always recommends RNA quality verification using control probes, prior to running a target marker. Expression pattern may vary from data shown here based on tissue preparation methods and/or associated sample biology.