

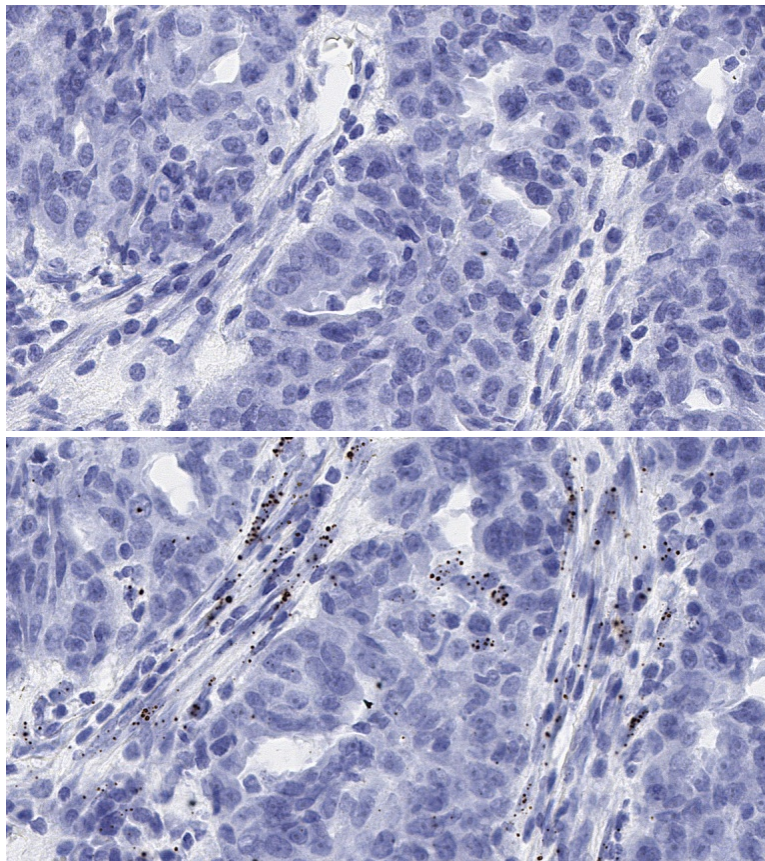
ADVANCED CELL DIAGNOSTICS

RNASCOPE® PROBE INFORMATION

<b>Catalog number:</b>	418701(Manual)*, 418706 (VS assay)*, 418707 (LS assay)* 418709 (2.5 VS assay)*, 418708 (2.5 LS assay)*
<b>Species:</b>	Homo sapiens
<b>Target Gene:</b>	HGF
<b>Alternate names:</b>	SF; HGFB; HPTA; F-TCF; DFNB39
<b>Entrez Gene ID:</b>	3082
<b>Accession#:</b>	NM_000601.4
<b>Unigene:</b>	Hs.396530
<b>Target Sequence:</b>	Homo sapiens hepatocyte growth factor (hepapoietin A; scatter factor) (HGF), transcript variant 1, mRNA
<b>Probe Region:</b>	346-1806
<b>ZZ pair number:</b>	30

\* Target region is the same across manual and automation

PROBE DATA



RNAScope® Manual Brown Assay performed on FFPE ovarian cancer tissue under standard condition, using the dapB Negative Control probe (Top; Cat. No. 310043) and Hs-HGF-v2d probe (Bottom; Cat. No. 418701), 40X

For more information regarding this target gene: <http://www.ncbi.nlm.nih.gov/gene/3082>

**Note:** ACD always recommends RNA quality verification using control probes, prior to running a target marker. Expression pattern may vary from data shown here based on tissue preparation methods and/or associated sample biology.