



ADVANCED CELL DIAGNOSTICS

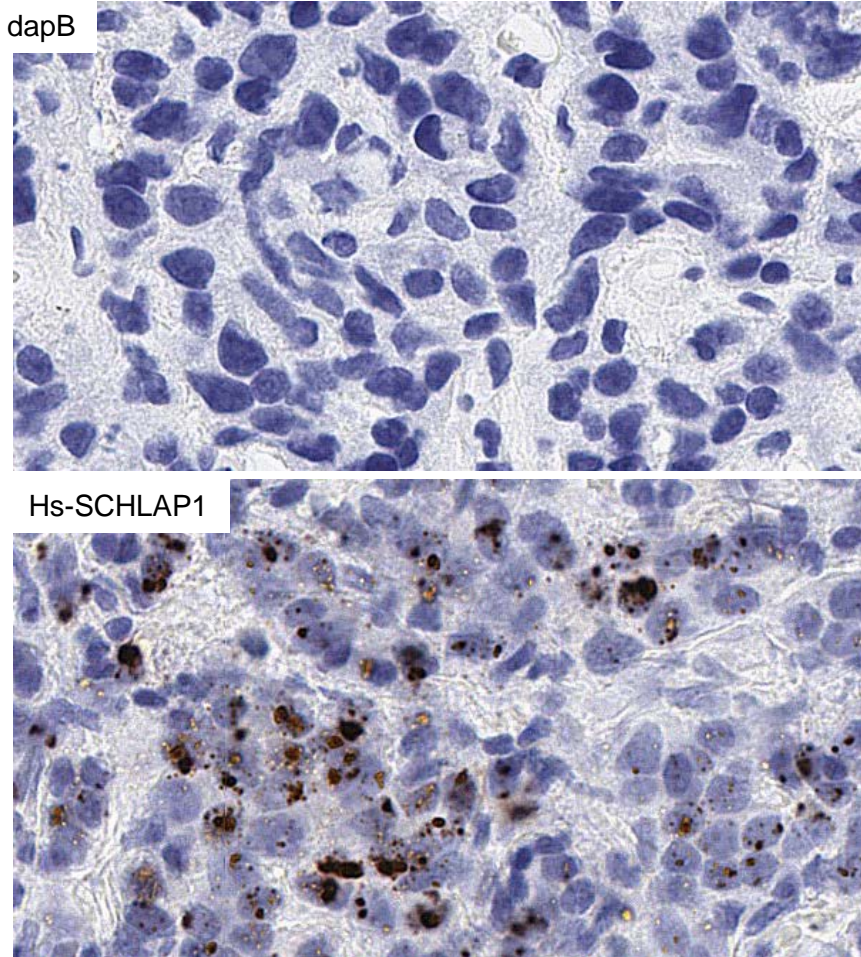
TARGET PROBE: HS-SCHLAP1

RNASCOPE® PROBE INFORMATION

Catalog number:	313861 (Manual)*, 313869 (2.5 VS assay)*, 313868 (2.5 LS assay)*
Species:	Homo sapiens
Target Gene:	SCHLAP1
Alternate names:	PCAT11; PCAT114; LINC00913; SCHLAP1
Entrez Gene ID:	101669767
Accession#:	NR_104325
Unigene:	N/A
Target Sequence:	PREDICTED: Homo sapiens long intergenic non-protein coding RNA 913 (LINC00913), transcript variant X2, misc_RNA?gb JX117424.1 Homo sapiens Second Chromosome Locus Associated with Prostate 1 isoform 7 (SCHLAP1), complete sequence
Probe Region:	313 - 1485
ZZ pair number:	17

* Target region is the same across RNAscope® manual and automation assays

PROBE DATA



RNAscope® Manual Brown Assay performed on FFPE prostate cancer tissue under standard condition, using the dapB Negative Control probe (Top; Cat. No. 310043) and Hs-SCHLAP1 probe (Bottom; Cat. No. 313861), 40X

For more information regarding this target gene: <http://www.ncbi.nlm.nih.gov/gene/101669767>

Note: ACD always recommends RNA quality verification using control probes, prior to running a target marker.

Expression pattern may vary from data shown here based on tissue preparation methods and/or associated sample biology.