

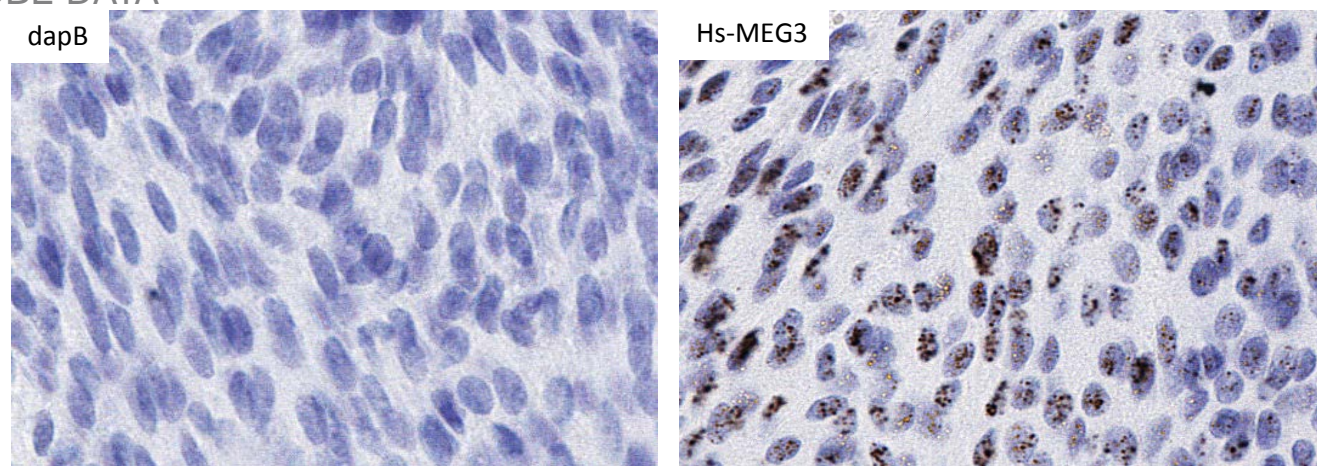
ADVANCED CELL DIAGNOSTICS

RNASCOPE® PROBE INFORMATION

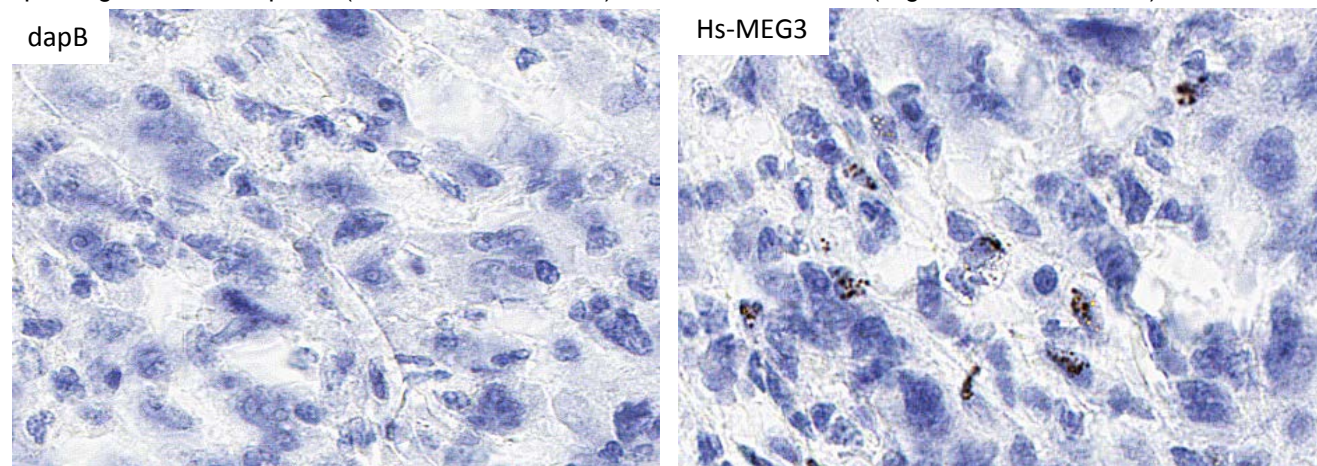
Catalog number:	400821 (Manual)*, 400829 (2.5 VS assay)*, 400828 (2.5 LS assay)*
Species:	Homo sapiens
Target Gene:	MEG3
Alternate names:	GTL2; FP504; prebp1; PRO0518; PRO2160; LINC00023; NCRNA00023; onco-lncRNA-83; MEG3
Entrez Gene ID:	55384
Accession#:	NR_002766.2
Unigene:	Hs.654863
Target Sequence:	Homo sapiens maternally expressed 3 (non-protein coding) (MEG3), transcript variant 1, non-coding RNA
Probe Region:	66-1541
ZZ pair number:	16

* Target region is the same across RNAScope® manual and automation assays

PROBE DATA



RNAScope® Manual Brown Assay performed on FFPE meningeoma tissue under standard condition, using the dapB Negative Control probe (Left; Cat. No. 310043) and Hs-MEG3 probe (Right; Cat. No. 400821), 40X



RNAScope® Manual Brown Assay performed on FFPE gastric cancer tissue under standard condition, using the dapB Negative Control probe (Left; Cat. No. 310043) and Hs-MEG3 probe (Right; Cat. No. 400821), 40X

For more information regarding this target gene: <http://www.ncbi.nlm.nih.gov/gene/55384>

Note: ACD always recommends RNA quality verification using control probes, prior to running a target marker.

Expression pattern may vary from data shown here based on tissue preparation methods and/or associated sample biology.