



TARGET PROBE: HS-CCR2

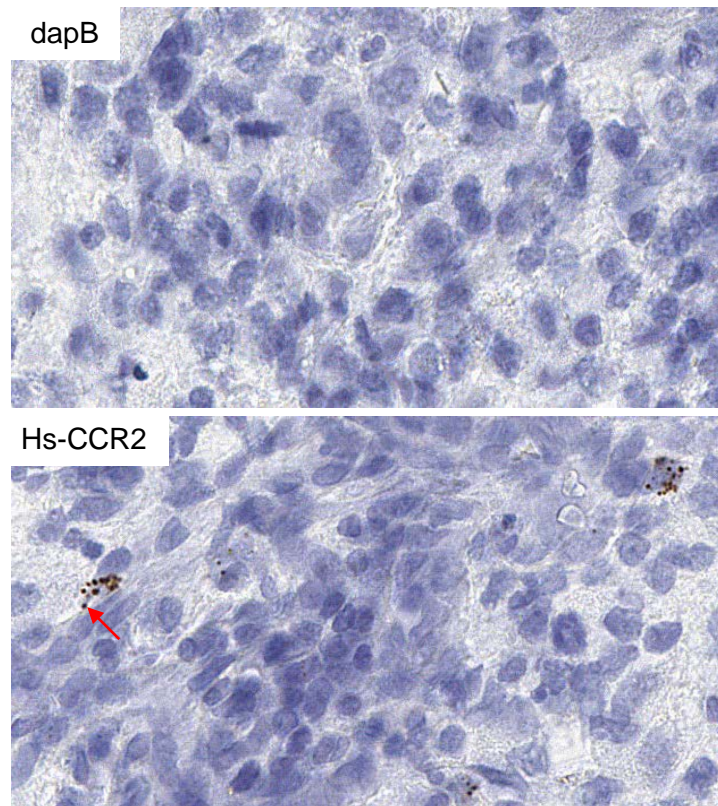
ADVANCED CELL DIAGNOSTICS

RNASCOPE® PROBE INFORMATION

Catalog number:	438221(Manual)*, 438229 (2.5 VS assay)*, 438228 (2.5 LS assay)*
Species:	Homo sapiens
Target Gene:	CCR2
Alternate names:	CC-CKR-2; CCR2; CCR2A; CCR2B; CD192; CKR2; CKR2A; CKR2B; CMKBR2; MCP-1-R
Entrez Gene ID:	72930
Accession#:	NM_001123041.2
Unigene:	Hs.511794
Target Sequence:	Homo sapiens chemokine (C-C motif) receptor 2 (CCR2) transcript variant A mRNA
Probe Region:	2-1576
ZZ pair number:	20

* Target region is the same across RNAScope® manual and automation assays

PROBE DATA



RNAScope® Manual Brown Assay performed on FFPE Glioma tissue under standard condition, using the dapB Negative Control probe (Top; Cat. No. 310043) and Hs-CCR2 probe (Bottom; Cat. No. 438221), 40X. Red arrow indicates representative target probe detection

For more information regarding this target gene: <http://www.ncbi.nlm.nih.gov/gene/729230>

Note: ACD always recommends RNA quality verification using control probes, prior to running a target marker. Expression pattern may vary from data shown here based on tissue preparation methods and/or associated sample biology.