



TARGET PROBE: HS-MAP2K1

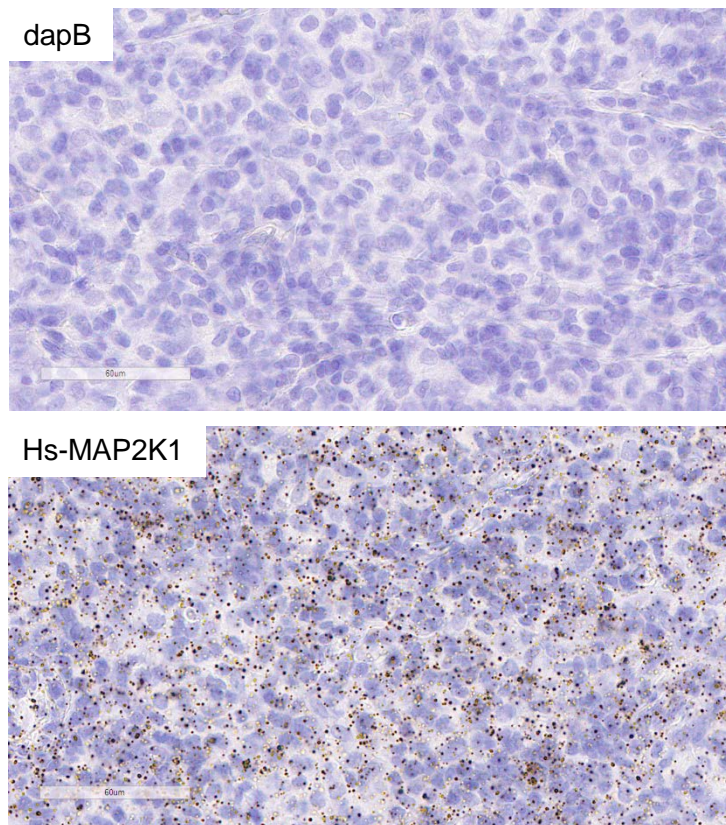
ADVANCED CELL DIAGNOSTICS

RNASCOPE® PROBE INFORMATION

Catalog number:	419641 (Manual)*, 419649 (2.5 VS assay)*, 419648 (2.5 LS assay)*
Species:	Homo sapiens
Target Gene:	MAP2K1
Alternate names:	CFC3; MEK1; MKK1; MAPKK1; PRKMK1
Entrez Gene ID:	5604
Accession#:	NM_002755.3
Unigene:	Hs.145442
Target Sequence:	Homo sapiens mitogen-activated protein kinase kinase 1 (MAP2K1) mRNA
Probe Region:	901-1967
ZZ pair number:	20

* Target region is the same across RNAscope® manual and automation assays

PROBE DATA



RNAscope® Manual Brown Assay performed on FFPE lymphoma tissue under standard condition, using the dapB Negative Control probe (Top; Cat. No. 310043) and Hs-MAP2K1 probe (Bottom; Cat. No. 419641), 40X

For more information regarding this target gene: <http://www.ncbi.nlm.nih.gov/gene/5604>

Note: ACD always recommends RNA quality verification using control probes, prior to running a target marker.

Expression pattern may vary from data shown here based on tissue preparation methods and/or associated sample biology.