



TARGET PROBE: HS-IGF1R

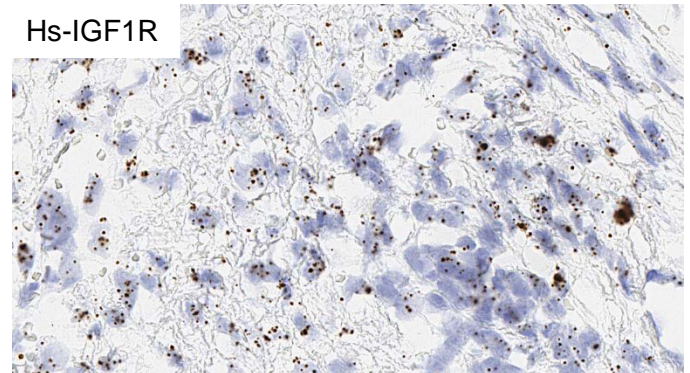
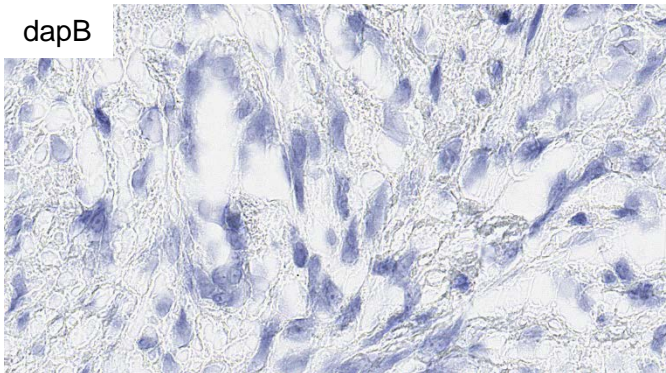
ADVANCED CELL DIAGNOSTICS

RNASCOPE® PROBE INFORMATION

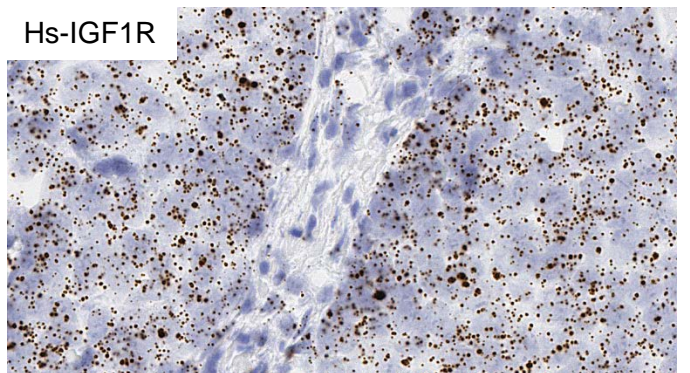
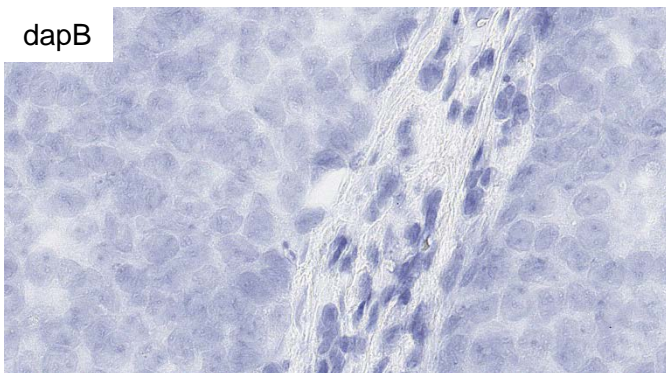
Catalog number:	415811 (Manual)*, 415819 (2.5 VS assay)*, 415818 (2.5 LS assay)*
Species:	Homo sapiens
Target Gene:	IGF1R
Alternate names:	IGFR; CD221; IGFIK; JTK13
Entrez Gene ID:	3480
Accession#:	NM_000875.3
Unigene:	Hs.643120
Target Sequence:	Homo sapiens insulin-like growth factor 1 receptor (IGF1R) mRNA
Probe Region:	2485-3381
ZZ pair number:	20

* Target region is the same across RNAscope® manual and automation assays

PROBE DATA



RNAscope® Manual Brown Assay performed on FFPE colon cancer tissue under standard condition, using the dapB Negative Control probe (Left; Cat. No. 310043) and Hs-IGF1R probe (Right; Cat. No. 415811), 40X



RNAscope® Manual Brown Assay performed on FFPE breast cancer tissue under standard condition, using the dapB Negative Control probe (Left; Cat. No. 310043) and Hs-IGF1R probe (Right; Cat. No.415811), 40X

For more information regarding this target gene: <http://www.ncbi.nlm.nih.gov/gene/3480>

Note: ACD always recommends RNA quality verification using control probes, prior to running a target marker.

Expression pattern may vary from data shown here based on tissue preparation methods and/or associated sample biology.