



# TARGET PROBE: HS-PPARA

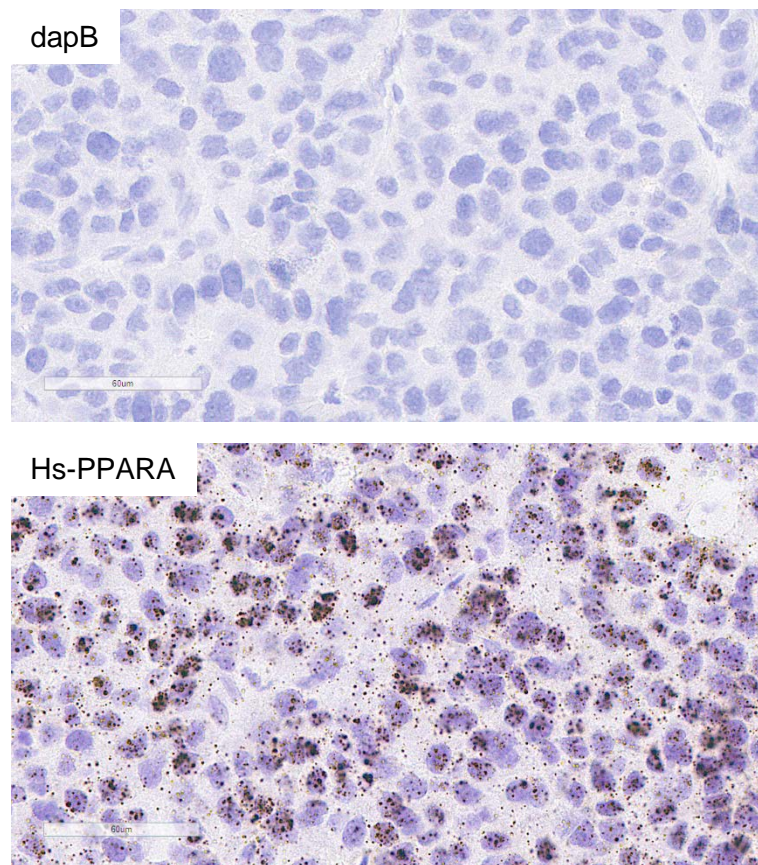
ADVANCED CELL DIAGNOSTICS

## RNASCOPE® PROBE INFORMATION

<b>Catalog number:</b>	445201 (Manual)*, 445209 (2.5 VS assay)*, 445208 (2.5 LS assay)*
<b>Species:</b>	Homo sapiens
<b>Target Gene:</b>	PPARA
<b>Alternate names:</b>	NR1C1,PPAR,PPARalpha,hPPAR
<b>Entrez Gene ID:</b>	5465
<b>Accession#:</b>	NM_001001928.2
<b>Unigene:</b>	Hs.103110
<b>Target Sequence:</b>	Homo sapiens peroxisome proliferator-activated receptor alpha (PPARA) transcript variant 3 mRNA
<b>Probe Region:</b>	102 - 1267
<b>ZZ pair number:</b>	20

\* Target region is the same across RNAscope® manual and automation assays

## PROBE DATA



RNAscope® Manual Brown Assay performed on FFPE liver cancer tissue under standard condition, using the dapB Negative Control probe (Top; Cat. No. 310043) and Hs-PPARA probe (Bottom; Cat. No. 445201), 40X

For more information regarding this target gene: <http://www.ncbi.nlm.nih.gov/gene/5465>

**Note:** ACD always recommends RNA quality verification using control probes, prior to running a target marker. Expression pattern may vary from data shown here based on tissue preparation methods and/or associated sample biology.