



TARGET PROBE: HS-PCGEM1

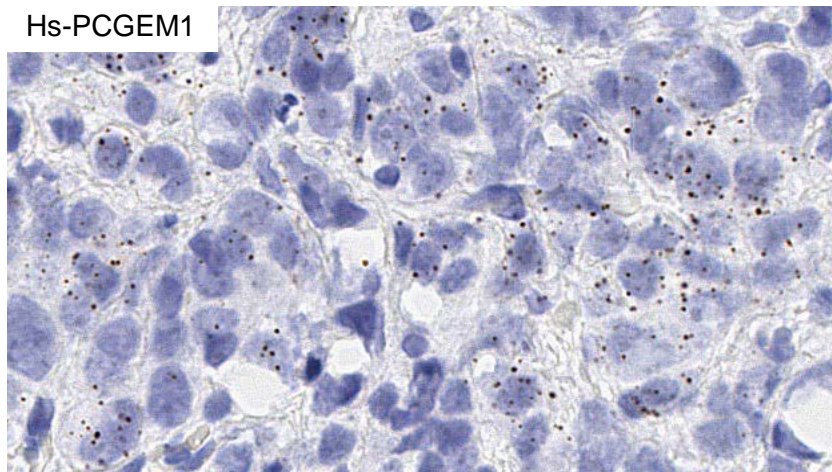
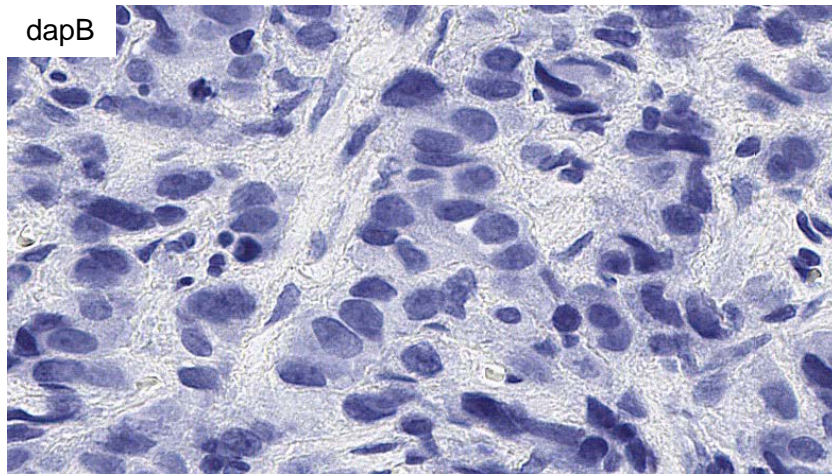
ADVANCED CELL DIAGNOSTICS

RNASCOPE® PROBE INFORMATION

Catalog number:	409321 (Manual)*, 409329 (2.5 VS assay)*, 409328 (2.5 LS assay)*
Species:	Homo sapiens
Target Gene:	PCGEM1
Alternate names:	PCAT9; LINC00071; NCRNA00071; PCGEM1
Entrez Gene ID:	64002
Accession#:	NR_002769.1
Unigene:	Hs.546994
Target Sequence:	99 - 1482
Probe Region:	Homo sapiens PCGEM1 prostate-specific transcript (non-protein coding) (PCGEM1) non-coding RNA
ZZ pair number:	20

* Target region is the same across RNAscope® manual and automation assays

PROBE DATA



RNAscope® Manual Brown Assay performed on FFPE prostate cancer tissue under standard condition, using the dapB Negative Control probe (Top; Cat. No. 310043) and Hs-PCGEM1 probe (Bottom; Cat. No. 409321), 40X

For more information regarding this target gene: <http://www.ncbi.nlm.nih.gov/gene/64002>

Note: ACD always recommends RNA quality verification using control probes, prior to running a target marker.

Expression pattern may vary from data shown here based on tissue preparation methods and/or associated sample biology.