

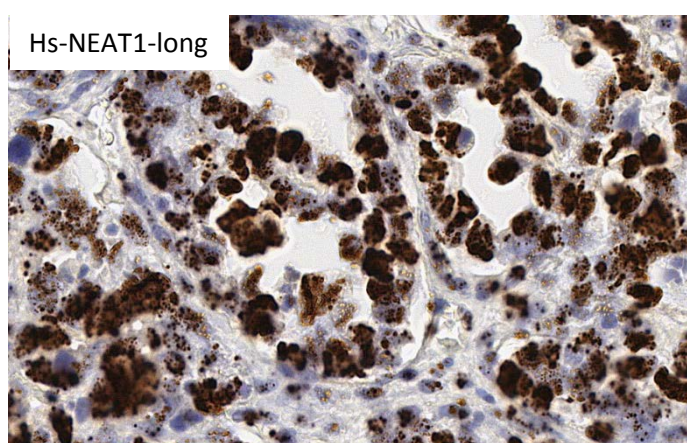
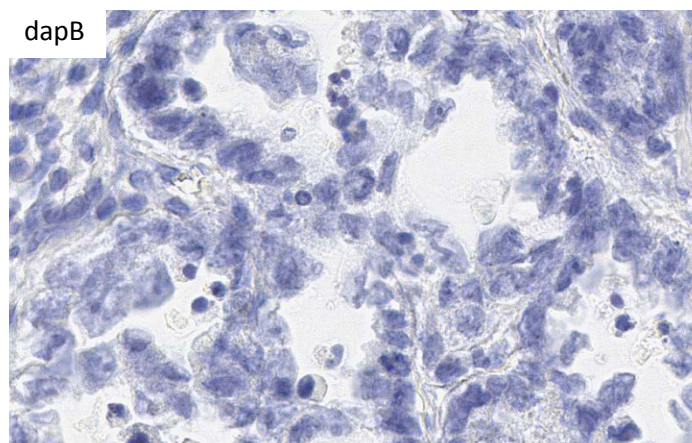
## ADVANCED CELL DIAGNOSTICS

### RNASCOPE® PROBE INFORMATION

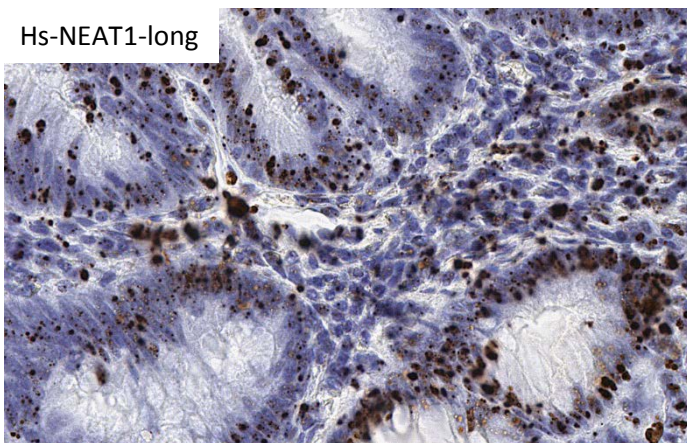
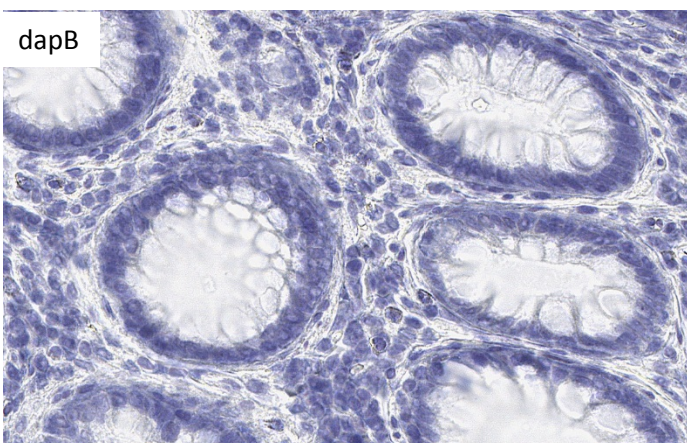
<b>Catalog number:</b>	411541 (Manual)*, 411549 (2.5 VS assay)*, 411548 (2.5 LS assay)*
<b>Species:</b>	Homo sapiens
<b>Target Gene:</b>	NEAT1-long
<b>Alternate names:</b>	VINC; TncRNA; LINC00084; NCRNA00084; NEAT1
<b>Entrez Gene ID:</b>	283131
<b>Accession#:</b>	NC_000011.9
<b>Unigene:</b>	Hs.523789
<b>Target Sequence:</b>	Homo sapiens chromosome 11 GRCh37.p13 Primary Assembly chr11:65190269-65212028 (NEAT1long)
<b>Probe Region:</b>	4120-5238
<b>ZZ pair number:</b>	20

\* Target region is the same across RNAscope® manual and automation assays

### PROBE DATA



RNAscope® Manual Brown Assay performed on FFPE ovarian cancer tissue under standard condition, using the dapB Negative Control probe (Left; Cat. No. 310043) and Hs-NEAT1-long probe (Right; Cat. No. 411541), 40X



RNAscope® Manual Brown Assay performed on FFPE esophageal cancer tissue under standard condition, using the dapB Negative Control probe (Left; Cat. No. 310043) and Hs-NEAT1-long probe (Right; Cat. No. 411541), 40X

For more information regarding this target gene: <http://www.ncbi.nlm.nih.gov/gene/283131>

**Note:** ACD always recommends RNA quality verification using control probes, prior to running a target marker.

Expression pattern may vary from data shown here based on tissue preparation methods and/or associated sample biology.