

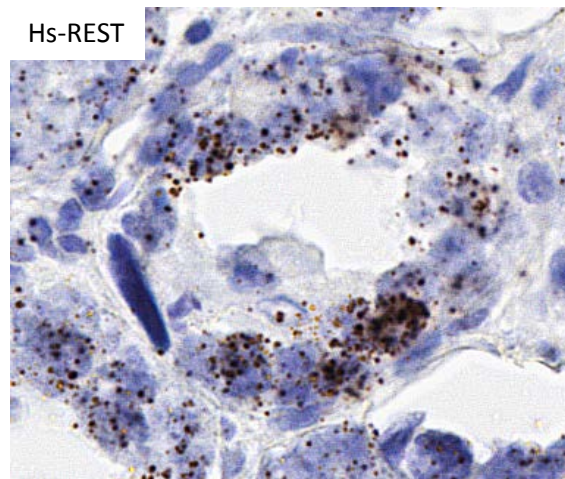
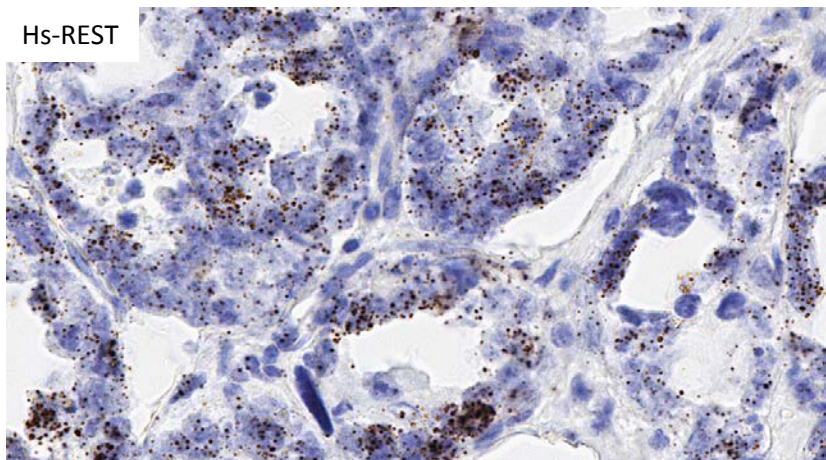
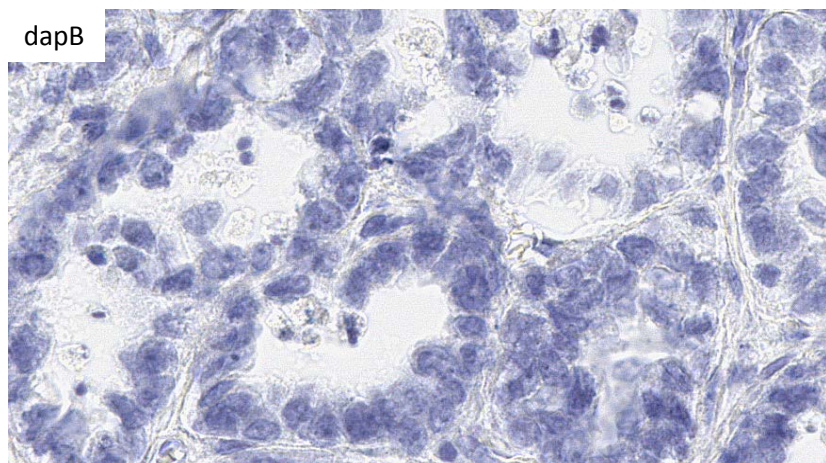
ADVANCED CELL DIAGNOSTICS

RNASCOPE® PROBE INFORMATION

Catalog number:	417871 (Manual)*, 417879 (2.5 VS assay)*, 417878 (2.5 LS assay)*
Species:	Homo sapiens
Target Gene:	REST
Alternate names:	WT6; XBR; NRSF; REST
Entrez Gene ID:	5978
Accession#:	NM_001193508.1
Unigene:	Hs.307836
Target Sequence:	Homo sapiens RE1-silencing transcription factor (REST) transcript variant 2 mRNA
Probe Region:	2432-3409
ZZ pair number:	20

* Target region is the same across RNAScope® manual and automation assays

PROBE DATA



Hs-REST (40X, zoom)

RNAScope® Manual Brown Assay performed on FFPE ovarian cancer tissue under standard condition, using the dapB Negative Control probe (Top; Cat. No. 310043) and Hs-REST probe (Bottom; Cat. No. 417871), 40X

For more information regarding this target gene: <http://www.ncbi.nlm.nih.gov/gene/5978>

Note: ACD always recommends RNA quality verification using control probes, prior to running a target marker.

Expression pattern may vary from data shown here based on tissue preparation methods and/or associated sample biology.