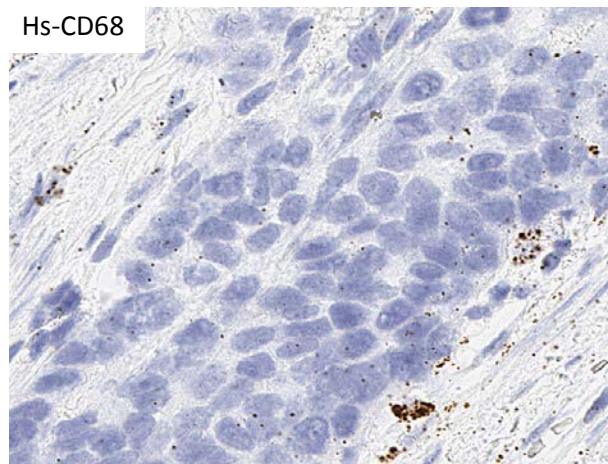
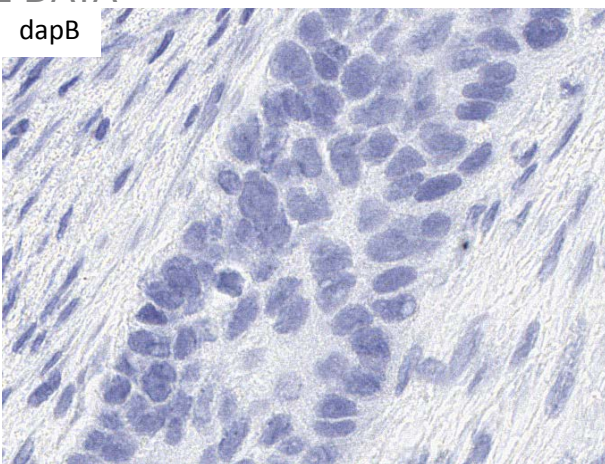


RNASCOPE® PROBE INFORMATION

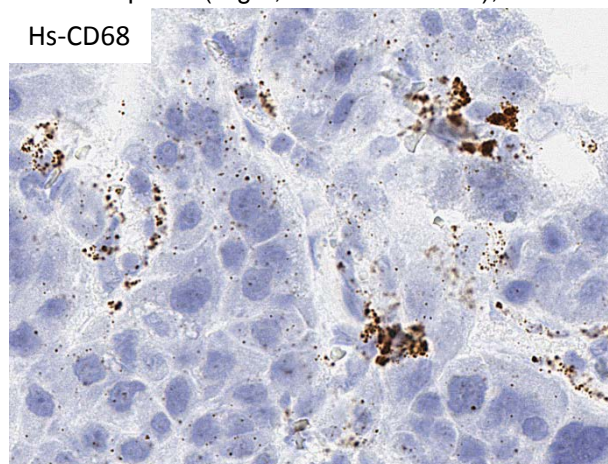
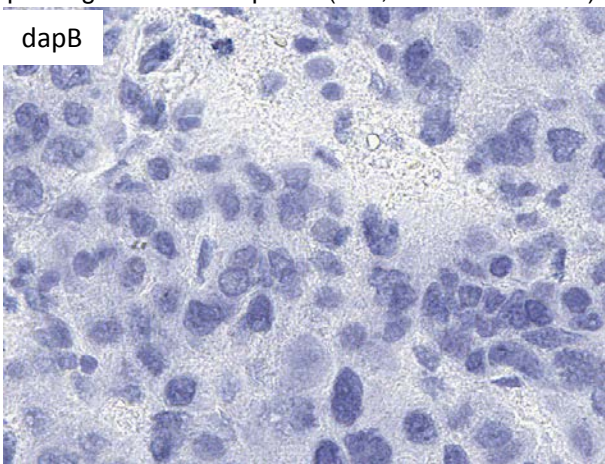
Catalog number:	560591 (Manual)*, 560599 (2.5 VS assay)*, 560598 (2.5 LS assay)*
Species:	Homo sapiens
Target Gene:	CD68
Alternate names:	CD68; GP110; LAMP4; SCARD1
Entrez Gene ID:	968
Accession#:	NM_001040059.1
Unigene:	Hs.647419
Target Sequence:	Homo sapiens CD68 molecule (CD68), transcript variant 2, mRNA
Probe Region:	367-1149
ZZ pair number:	20

* Target region is the same across RNAscope® manual and automation assays

PROBE DATA



RNAscope® Manual Brown Assay performed on FFPE esophageal cancer tissue under standard condition, using the dapB Negative Control probe (Left; Cat. No. 310043) and Hs-CD68 probe (Right; Cat. No. 560591), 40X



RNAscope® Manual Brown Assay performed on FFPE liver cancer tissue under standard condition, using the dapB Negative Control probe (Left; Cat. No. 310043) and Hs-CD68 probe (Right; Cat. No. 560591), 40X

For more information regarding this target gene: <http://www.ncbi.nlm.nih.gov/gene/968>

Note: ACD always recommends RNA quality verification using control probes, prior to running a target marker.

Expression pattern may vary from data shown here based on tissue preparation methods and/or associated sample biology.