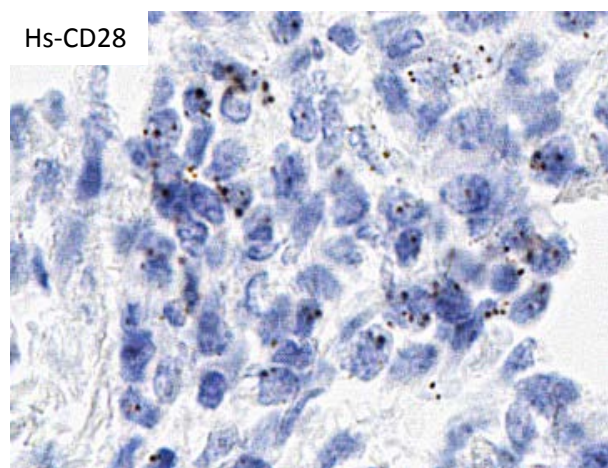
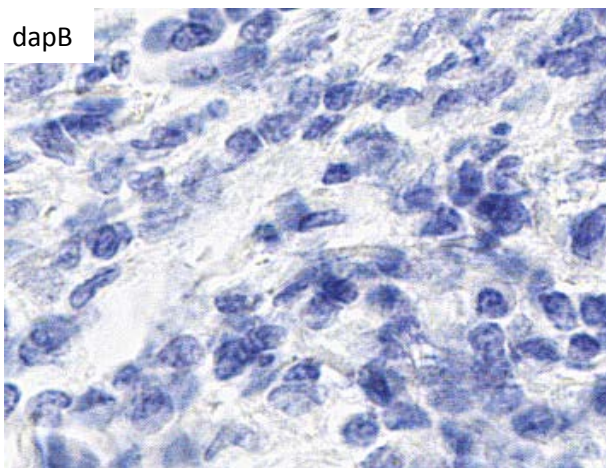


RNASCOPE® PROBE INFORMATION

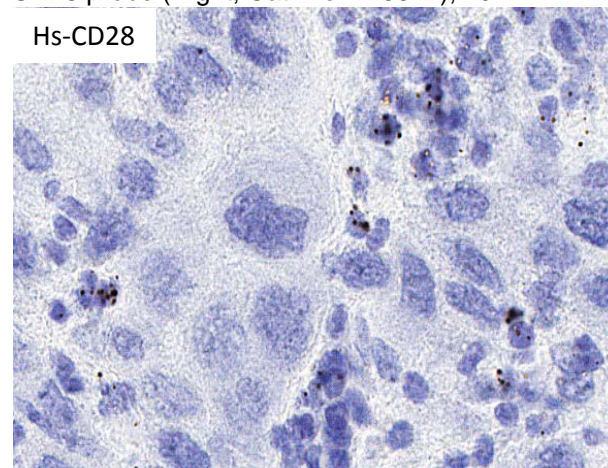
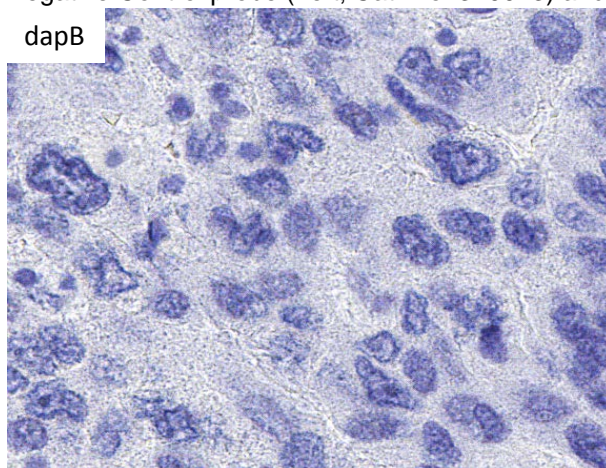
Catalog number:	448871 (Manual)*, 448879 (2.5 VS assay)*, 448878 (2.5 LS assay)*
Species:	Homo sapiens
Target Gene:	CD28
Alternate names:	TP44; CD28
Entrez Gene ID:	940
Accession#:	NM_006139.3
Unigene:	Hs.443123
Target Sequence:	Homo sapiens CD28 molecule (CD28) transcript variant 1 mRNA
Probe Region:	811-2350
ZZ pair number:	20

* Target region is the same across RNAscope® manual and automation assays

PROBE DATA



RNAscope® Manual Brown Assay performed on FFPE lung cancer tissue under standard condition, using the dapB Negative Control probe (Left; Cat. No. 310043) and Hs-CD28 probe (Right; Cat. No. 448871), 40X



RNAscope® Manual Brown Assay performed on FFPE liver cancer tissue under standard condition, using the dapB Negative Control probe (Left; Cat. No. 310043) and Hs-CD28 probe (Right; Cat. No. 448871), 40X

For more information regarding this target gene: <http://www.ncbi.nlm.nih.gov/gene/940>

Note: ACD always recommends RNA quality verification using control probes, prior to running a target marker.

Expression pattern may vary from data shown here based on tissue preparation methods and/or associated sample biology.