

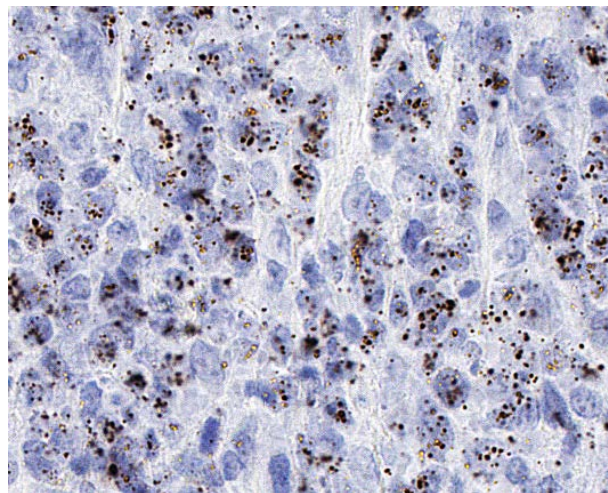
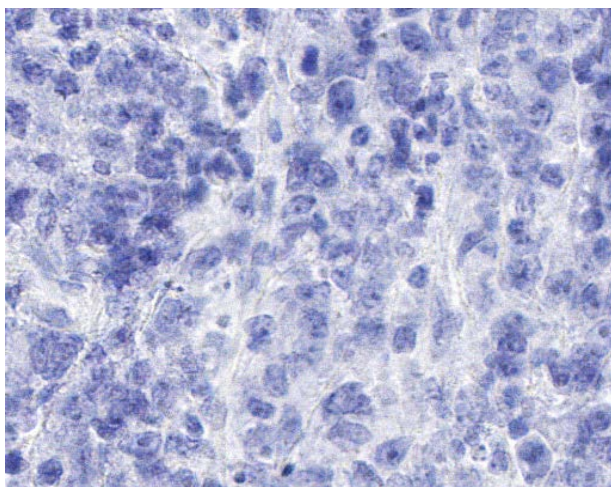
## ADVANCED CELL DIAGNOSTICS

### RNASCOPE® PROBE INFORMATION

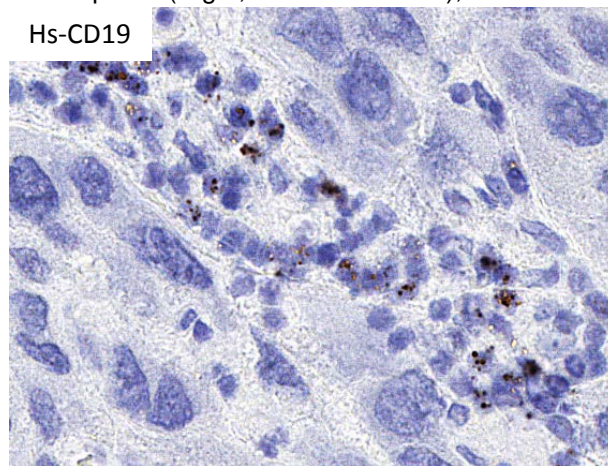
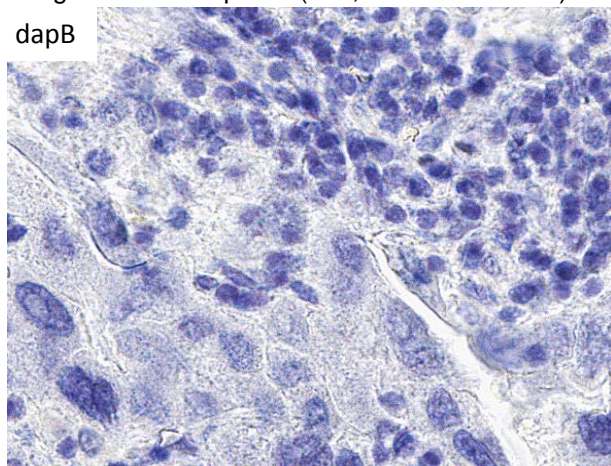
<b>Catalog number:</b>	402711 (Manual)*, 402719 (2.5 VS assay)*, 402718 (2.5 LS assay)*
<b>Species:</b>	Homo sapiens
<b>Target Gene:</b>	CD19
<b>Alternate names:</b>	B4; CVID3; CD19
<b>Entrez Gene ID:</b>	930
<b>Accession#:</b>	NM_001178098.1
<b>Unigene:</b>	Hs.652262
<b>Target Sequence:</b>	Homo sapiens CD19 molecule (CD19) transcript variant 1 mRNA
<b>Probe Region:</b>	216-1847
<b>ZZ pair number:</b>	20

\* Target region is the same across RNAscope® manual and automation assays

### PROBE DATA



RNAscope® Manual Brown Assay performed on FFPE lymphoma tissue under standard condition, using the dapB Negative Control probe (Left; Cat. No. 310043) and Hs-CD19 probe (Right; Cat. No. 402711), 40X



RNAscope® Manual Brown Assay performed on FFPE liver cancer tissue under standard condition, using the dapB Negative Control probe (Left; Cat. No. 310043) and Hs-CD19 probe (Right; Cat. No. 402711), 40X

For more information regarding this target gene: <http://www.ncbi.nlm.nih.gov/gene/930>

**Note:** ACD always recommends RNA quality verification using control probes, prior to running a target marker.

Expression pattern may vary from data shown here based on tissue preparation methods and/or associated sample biology.