



TARGET PROBE: HS-IGF2

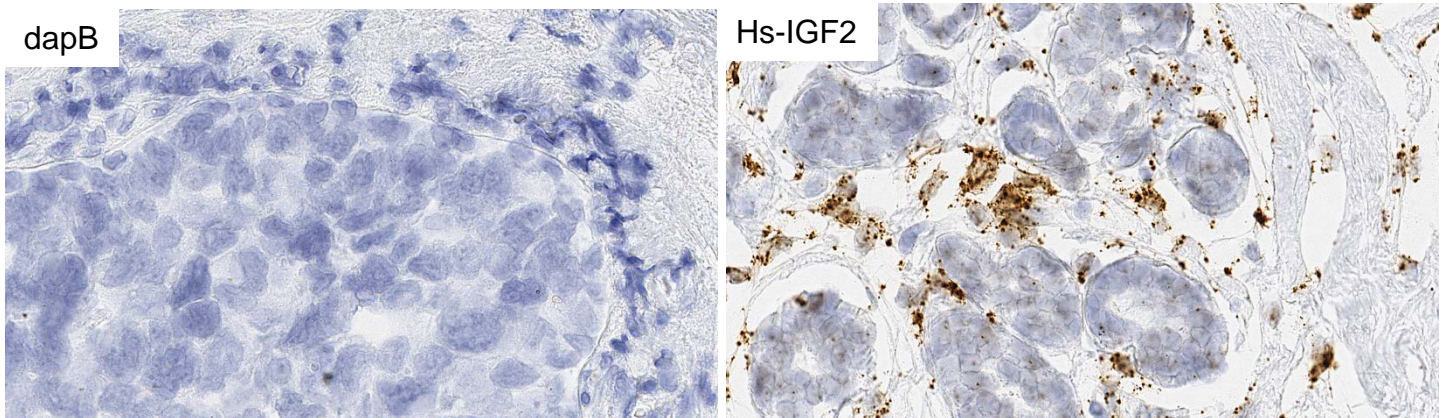
ADVANCED CELL DIAGNOSTICS

RNASCOPE® PROBE INFORMATION

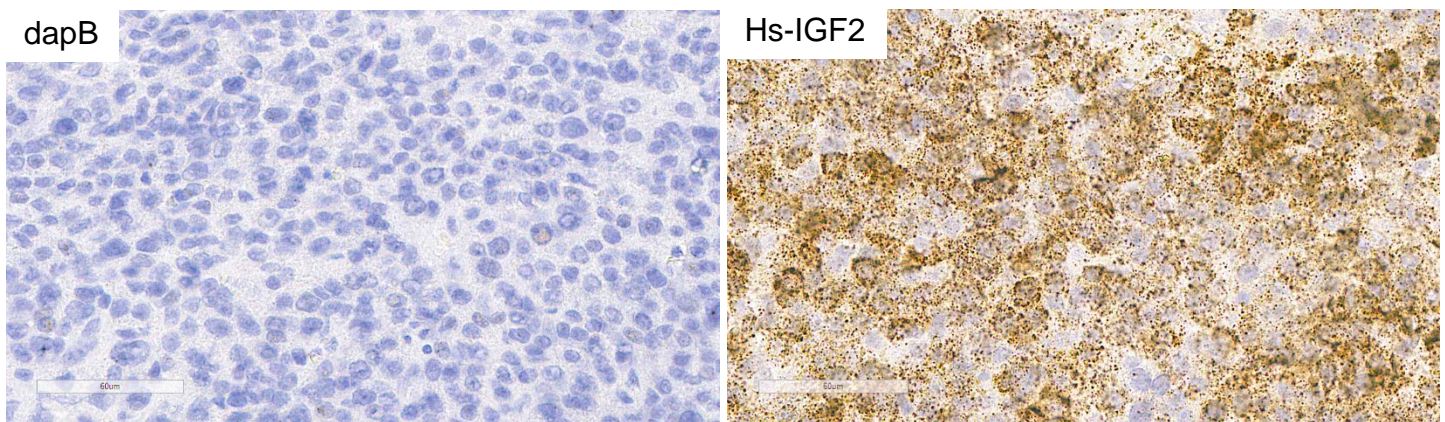
Catalog number:	594361 (Manual)*, 594369 (2.5 VS assay)*, 594368 (2.5 LS assay)*
Species:	Homo sapiens
Target Gene:	IGF2
Alternate names:	IGF2; GRDF; IGF-II; PP9974; C11orf43
Entrez Gene ID:	3481
Accession#:	NM_000612.4
Unigene:	Hs.272259
Target Sequence:	Homo sapiens insulin-like growth factor 2 (somatomedin A) (IGF2), transcript variant 1, mRNA
Probe Region:	692-2021
ZZ pair number:	20

* Target region is the same across RNAscope® manual and automation assays

PROBE DATA



RNAscope® Manual Brown Assay performed on FFPE Breast cancer tissue under standard condition, using the dapB Negative Control probe (Left; Cat. No. 310043) and Hs-IGF2 probe (Right; Cat. No. 594361), 40X.



RNAscope® Manual Brown Assay performed on FFPE Liver cancer tissue under standard condition, using the dapB Negative Control probe (Left; Cat. No. 310043) and Hs-IGF2 probe (Right; Cat. No. 594361), 40X.

For more information regarding this target gene: <http://www.ncbi.nlm.nih.gov/gene/3481>

Note: ACD always recommends RNA quality verification using control probes, prior to running a target marker. Expression pattern may vary from data shown here based on tissue preparation methods and/or associated sample biology.