



TARGET PROBE: HS-SMAD2

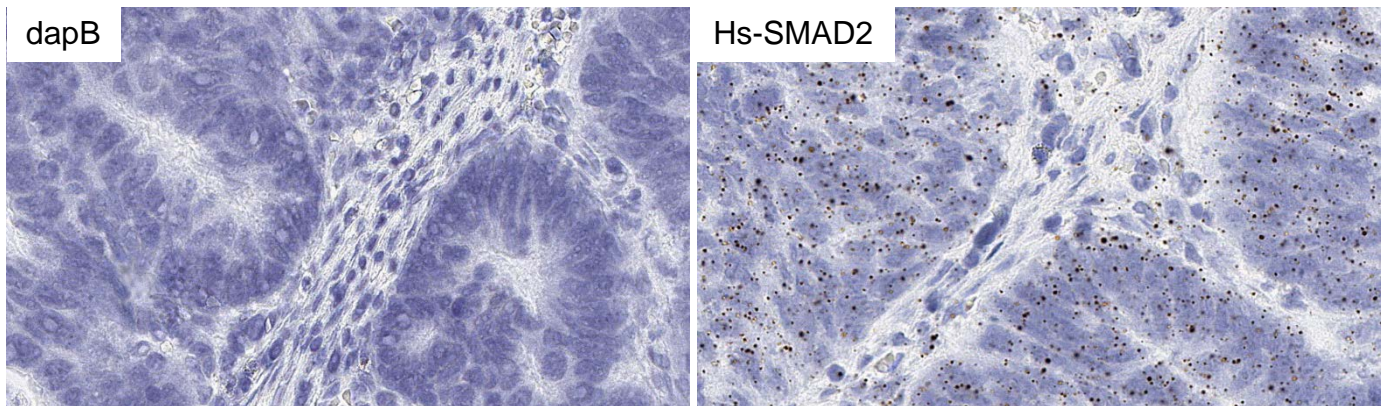
ADVANCED CELL DIAGNOSTICS

RNASCOPE® PROBE INFORMATION

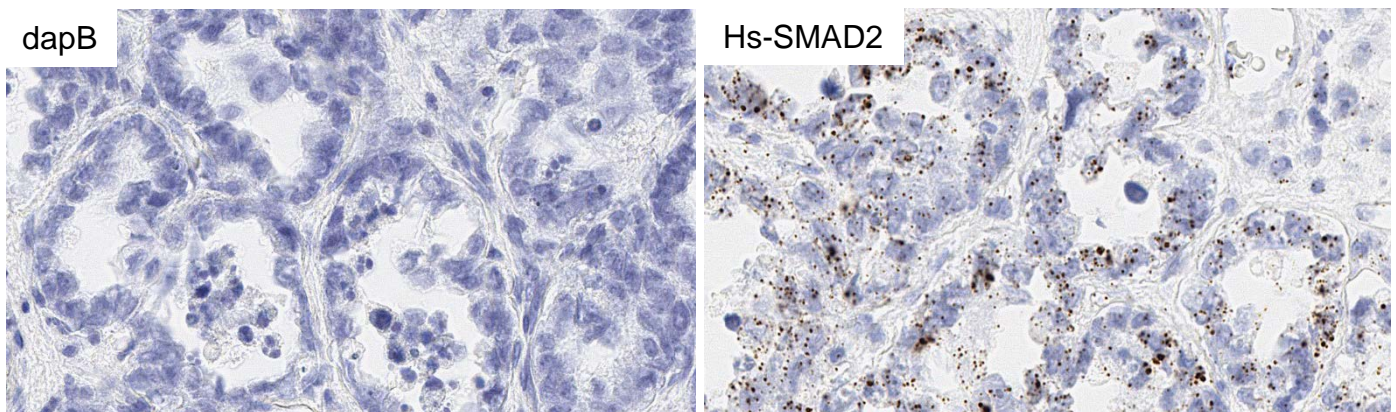
Catalog number:	404231 (Manual)*, 404239 (2.5 VS assay)*, 404238 (2.5 LS assay)*
Species:	Homo sapiens
Target Gene:	SMAD2
Alternate names:	JV18; JV18-1; MADH2; MADR2; SMAD2; hMAD-2; hSMAD2
Entrez Gene ID:	4087
Accession#:	NM_001135937.2
Unigene:	Hs.12253
Target Sequence:	Homo sapiens SMAD family member 2 (SMAD2), transcript variant 3, mRNA
Probe Region:	341 - 1268
ZZ pair number:	20

* Target region is the same across RNAscope® manual and automation assays

PROBE DATA



RNAscope® Manual Brown Assay performed on FFPE Colorectal cancer tissue under standard condition, using the dapB Negative Control probe (Left; Cat. No. 310043) and Hs-SMAD2 probe (Right; Cat. No. 404231), 40X.



RNAscope® Manual Brown Assay performed on FFPE Ovarian cancer tissue under standard condition, using the dapB Negative Control probe (Left; Cat. No. 310043) and Hs-SMAD2 probe (Right; Cat. No. 404231), 40X.

For more information regarding this target gene: <http://www.ncbi.nlm.nih.gov/gene/4087>

Note: ACD always recommends RNA quality verification using control probes, prior to running a target marker. Expression pattern may vary from data shown here based on tissue preparation methods and/or associated sample biology.