



TARGET PROBE: HS-MME

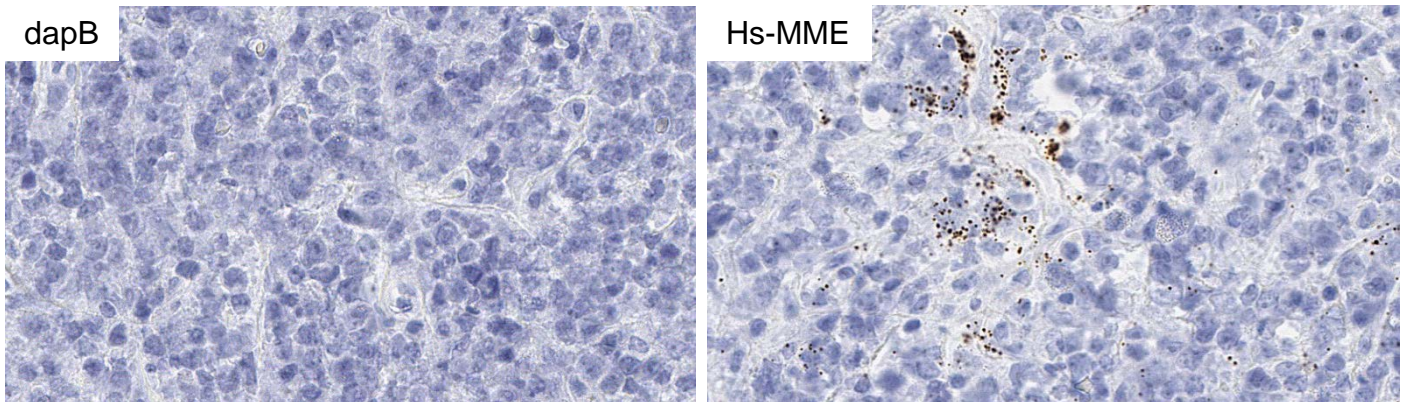
ADVANCED CELL DIAGNOSTICS

RNASCOPE® PROBE INFORMATION

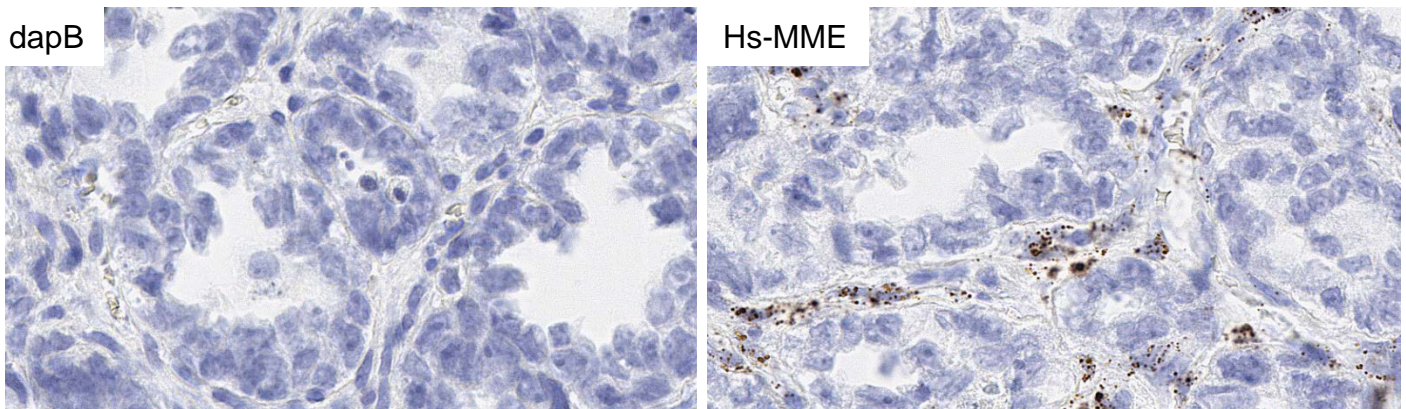
Catalog number:	410891 (Manual)*, 410899 (2.5 VS assay)*, 410898 (2.5 LS assay)*
Species:	Homo sapiens
Target Gene:	MME
Alternate names:	NEP; SFE; CD10; CALLA
Entrez Gene ID:	4311
Accession#:	NM_007289.2
Unigene:	Hs.307734
Target Sequence:	Homo sapiens membrane metallo-endopeptidase (MME) transcript variant 2b mRNA
Probe Region:	834-1895
ZZ pair number:	20

* Target region is the same across RNAscope® manual and automation assays

PROBE DATA



RNAscope® Manual Brown Assay performed on FFPE Lymphoma tissue under standard condition, using the dapB Negative Control probe (Left; Cat. No. 310043) and Hs-MME probe (Right; Cat. No. 410891), 40X.



RNAscope® Manual Brown Assay performed on FFPE Ovarian cancer tissue under standard condition, using the dapB Negative Control probe (Left; Cat. No. 310043) and Hs-MME probe (Right; Cat. No. 410891), 40X.

For more information regarding this target gene: <http://www.ncbi.nlm.nih.gov/gene/4311>

Note: ACD always recommends RNA quality verification using control probes, prior to running a target marker. Expression pattern may vary from data shown here based on tissue preparation methods and/or associated sample biology.