



TARGET PROBE: HS-LTA

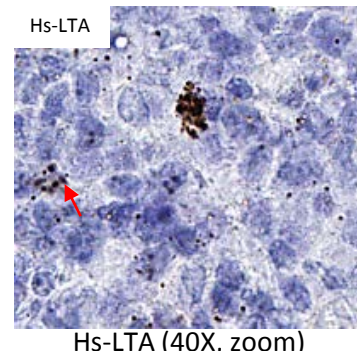
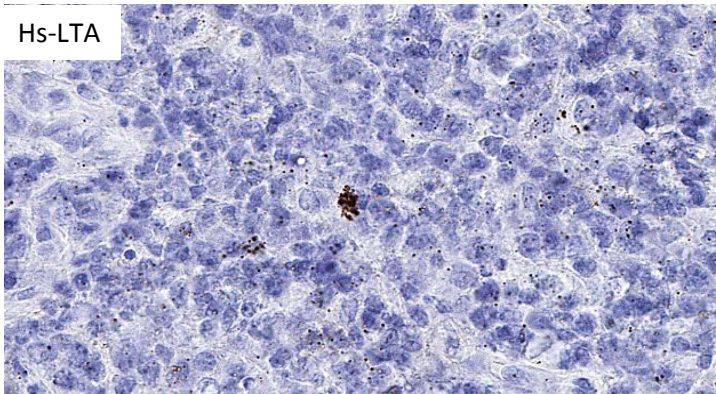
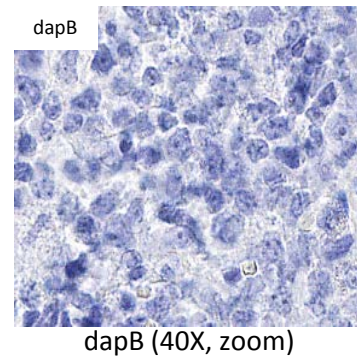
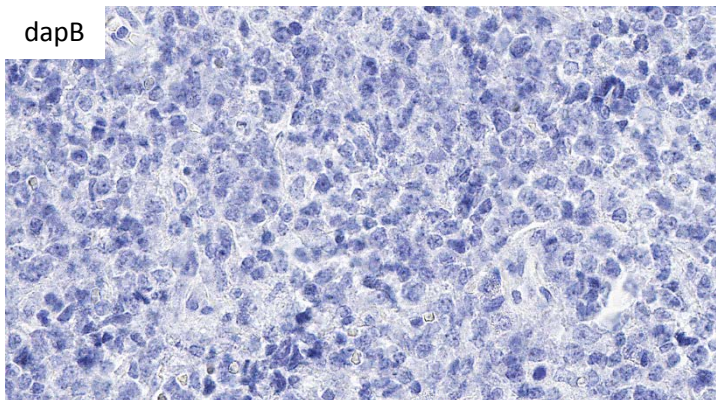
ADVANCED CELL DIAGNOSTICS

RNASCOPE® PROBE INFORMATION

Catalog number:	310461 (Manual)*, 310469 (2.5 VS assay)*, 310468 (2.5 LS assay)*
Species:	Homo sapiens
Target Gene:	LTA
Alternate names:	LT; TNFB; TNFSF1; TNLG1E; LTA
Entrez Gene ID:	4049
Accession#:	NM_000595.3
Unigene:	Hs.36
Target Sequence:	Homo sapiens lymphotoxin alpha (TNF superfamily, member 1) (LTA), transcript variant 2, mRNA
Probe Region:	179-1381
ZZ pair number:	20

* Target region is the same across RNAscope® manual and automation assays

PROBE DATA



RNAscope® Manual Brown Assay performed on FFPE lymphoma tissue under standard condition, using the dapB Negative Control probe (Top; Cat. No. 310043) and Hs-LTA probe (Bottom; Cat. No. 310461), 40X; Red arrows indicate representative target probe detection.

For more information regarding this target gene: <http://www.ncbi.nlm.nih.gov/gene/4049>

Note: ACD always recommends RNA quality verification using control probes, prior to running a target marker.

Expression pattern may vary from data shown here based on tissue preparation methods and/or associated sample biology.