



TARGET PROBE: HS-GZMB

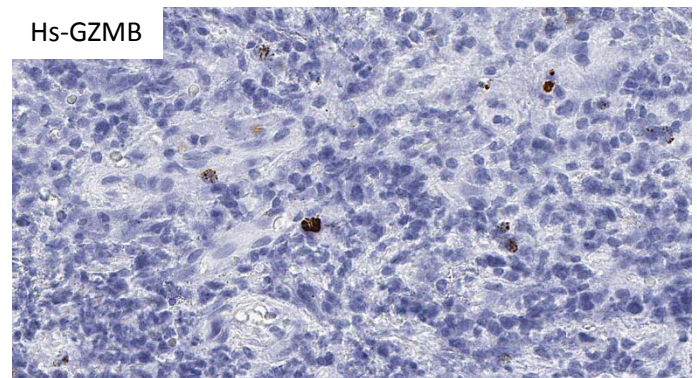
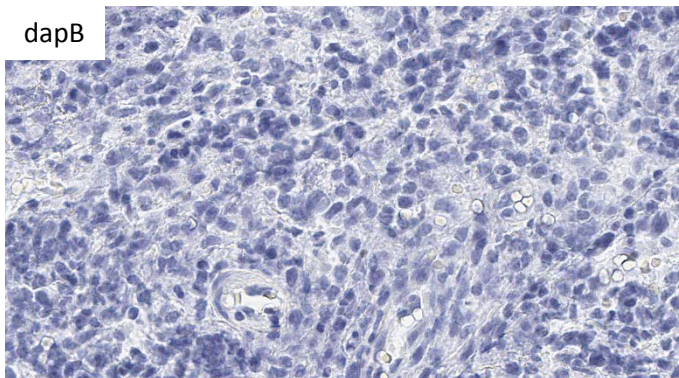
ADVANCED CELL DIAGNOSTICS

RNASCOPE® PROBE INFORMATION

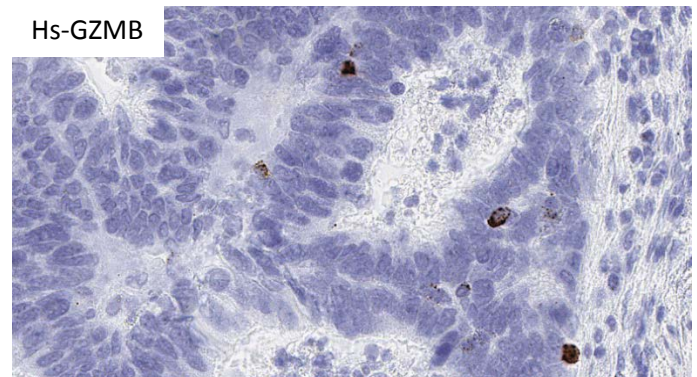
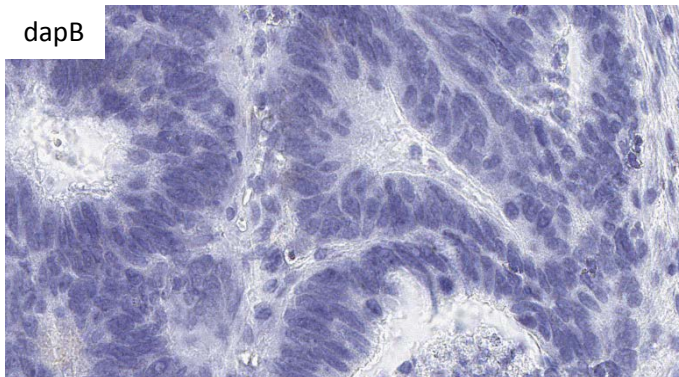
| | |
|-------------------------|--|
| Catalog number: | 445971 (Manual)*, 445979 (2.5 VS assay)*, 445978 (2.5 LS assay)* |
| Species: | Homo sapiens |
| Target Gene: | GZMB |
| Alternate names: | GZMB; HLP; CCPI; CGL1; CSPB; SECT; CGL-1; CSP-B; CTLA1; CTSG1 |
| Entrez Gene ID: | 3002 |
| Accession#: | NM_004131.4 |
| Unigene: | Hs.1051 |
| Target Sequence: | Homo sapiens granzyme B (granzyme 2 cytotoxic T-lymphocyte-associated serine esterase 1) (GZMB) mRNA |
| Probe Region: | 3-912 |
| ZZ pair number: | 11 |

* Target region is the same across RNAscope® manual and automation assays

PROBE DATA



RNAscope® Manual Brown Assay performed on FFPE lymphoma tissue under standard condition, using the dapB Negative Control probe (Left; Cat. No. 310043) and Hs-GZMB probe (Right; Cat. No. 445971), 40X



RNAscope® Manual Brown Assay performed on FFPE colorectal cancer tissue under standard condition, using the dapB Negative Control probe (Left; Cat. No. 310043) and Hs-GZMB probe (Right; Cat. No. 445971), 40X

For more information regarding this target gene: <http://www.ncbi.nlm.nih.gov/gene/3002>

Note: ACD always recommends RNA quality verification using control probes, prior to running a target marker.

Expression pattern may vary from data shown here based on tissue preparation methods and/or associated sample biology.