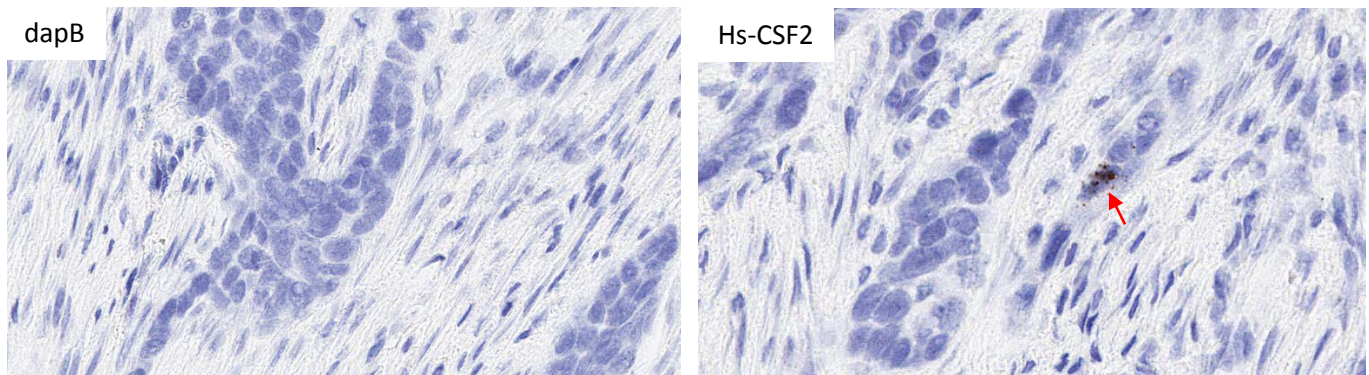


RNASCOPE® PROBE INFORMATION

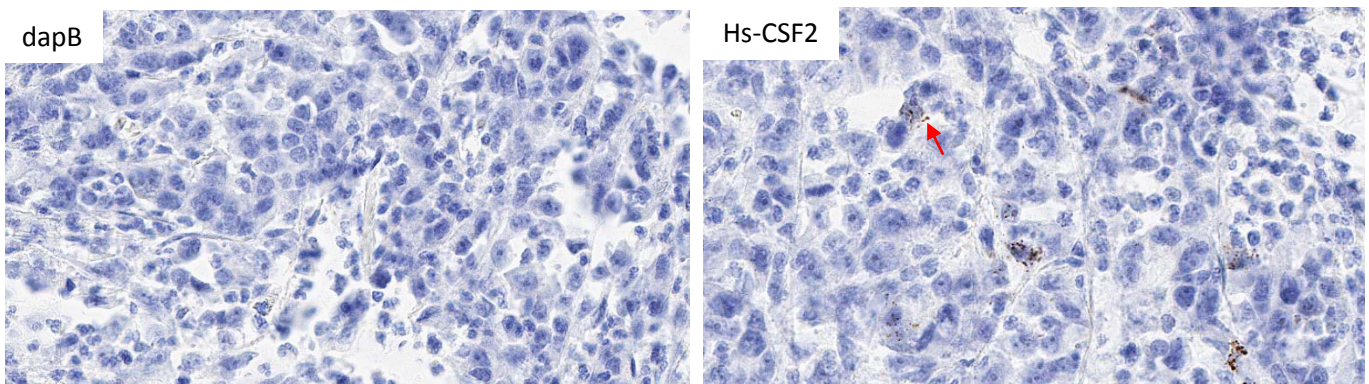
Catalog number:	313981 (Manual)*, 313989 (2.5 VS assay)*, 313988 (2.5 LS assay)*
Species:	Homo sapiens
Target Gene:	CSF2
Alternate names:	GMCSF; CSF2
Entrez Gene ID:	1437
Accession#:	NM_000758.3
Unigene:	Hs.1349
Target Sequence:	Homo sapiens colony stimulating factor 2 (granulocyte-macrophage) (CSF2), mRNA
Probe Region:	2-636
ZZ pair number:	15

* Target region is the same across RNAscope® manual and automation assays

PROBE DATA



RNAscope® Manual Brown Assay performed on FFPE esophageal cancer tissue under standard condition, using the dapB Negative Control probe (Left; Cat. No. 310043) and Hs-CSF2 probe (Right; Cat. No. 313981), 40X



RNAscope® Manual Brown Assay performed on FFPE Gastric cancer tissue under standard condition, using the dapB Negative Control probe (Left; Cat. No. 310043) and Hs-CSF2 probe (Right; Cat. No. 313981), 40X. Red arrows indicate representative target probe detection (Top, Bottom).

For more information regarding this target gene: <http://www.ncbi.nlm.nih.gov/gene/1437>

Note: ACD always recommends RNA quality verification using control probes, prior to running a target marker.

Expression pattern may vary from data shown here based on tissue preparation methods and/or associated sample biology.