



# TARGET PROBE: HS-BCL2

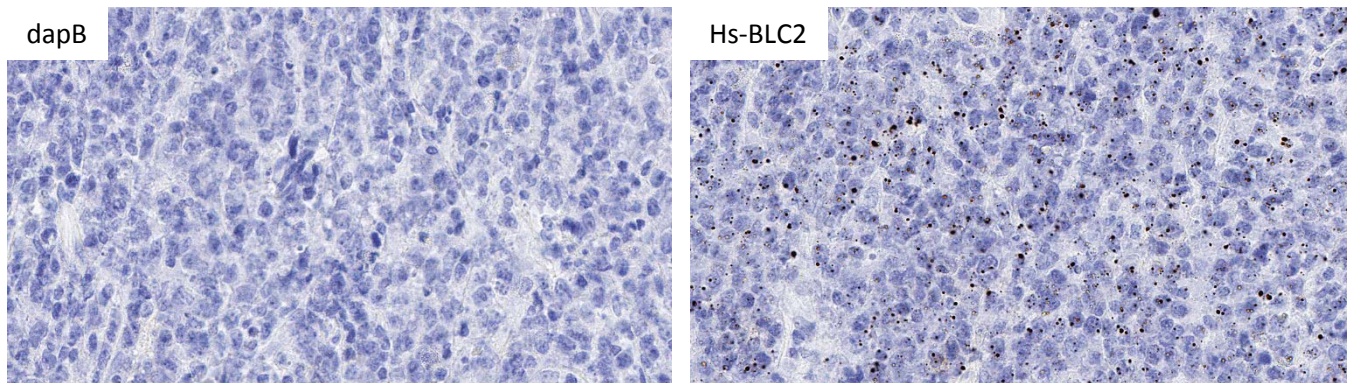
ADVANCED CELL DIAGNOSTICS

## RNASCOPE® PROBE INFORMATION

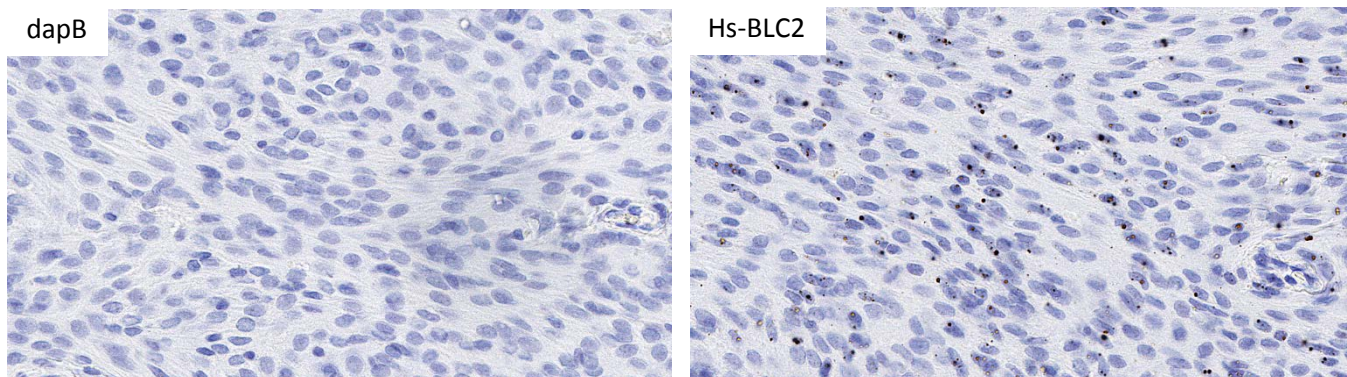
<b>Catalog number:</b>	591721 (Manual)*, 591729 (2.5 VS assay)*, 591728 (2.5 LS assay)*
<b>Species:</b>	Homo sapiens
<b>Target Gene:</b>	BCL2
<b>Alternate names:</b>	BCL2; Bcl-2; PPP1R50
<b>Entrez Gene ID:</b>	596
<b>Accession#:</b>	NM_000657.2
<b>Unigene:</b>	Hs.150749
<b>Target Sequence:</b>	Homo sapiens B-cell CLL/lymphoma 2 (BCL2), nuclear gene encoding mitochondrial protein, transcript variant beta, mRNA
<b>Probe Region:</b>	2-605
<b>ZZ pair number:</b>	14

\* Target region is the same across RNAscope® manual and automation assays

## PROBE DATA



RNAscope® Manual Brown Assay performed on FFPE lymphoma tissue under standard condition, using the dapB Negative Control probe (Left; Cat. No. 310043) and Hs-BCL2 probe (Right; Cat. No. 591721), 40X



RNAscope® Manual Brown Assay performed on FFPE meningioma tissue under standard condition, using the dapB Negative Control probe (Left; Cat. No. 310043) and Hs-BCL2 probe (Right; Cat. No. 591721), 40X

For more information regarding this target gene: <http://www.ncbi.nlm.nih.gov/gene/596>

**Note:** ACD always recommends RNA quality verification using control probes, prior to running a target marker.

Expression pattern may vary from data shown here based on tissue preparation methods and/or associated sample biology.