



TARGET PROBE: HS-BCL6

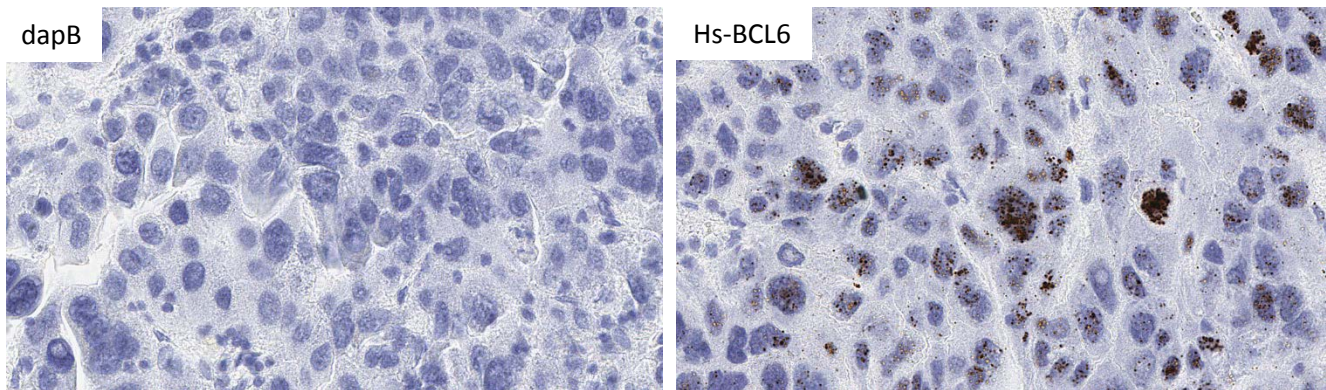
ADVANCED CELL DIAGNOSTICS

RNASCOPE® PROBE INFORMATION

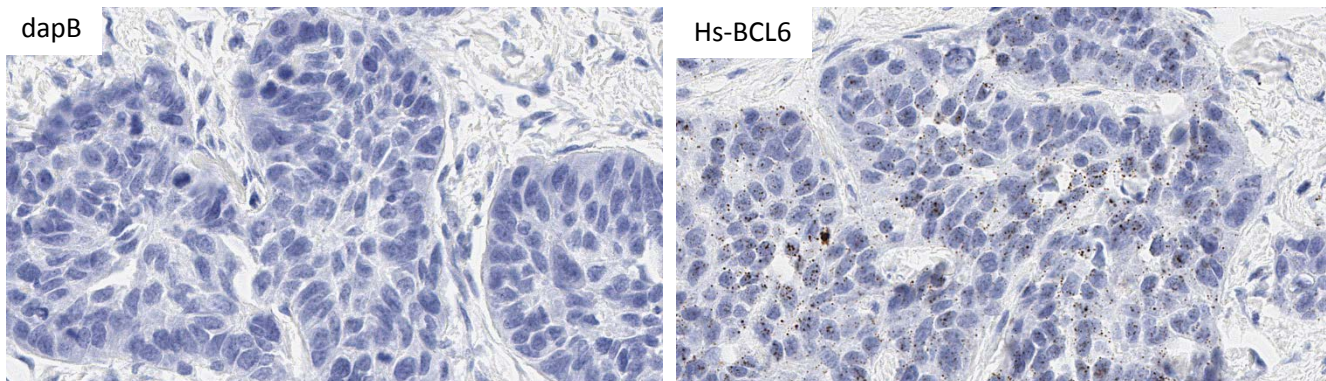
Catalog number:	407251 (Manual)*, 407259 (2.5 VS assay)*, 407258 (2.5 LS assay)*
Species:	Homo sapiens
Target Gene:	BCL6
Alternate names:	BCL5; BCL6; LAZ3; BCL6A; ZNF51; ZBTB27
Entrez Gene ID:	604
Accession#:	NM_001706.4
Unigene:	Hs.478588
Target Sequence:	Homo sapiens B-cell CLL/lymphoma 6 (BCL6), transcript variant 1, mRNA
Probe Region:	750-2099
ZZ pair number:	20

* Target region is the same across RNAscope® manual and automation assays

PROBE DATA



RNAscope® Manual Brown Assay performed on FFPE liver cancer tissue under standard condition, using the dapB Negative Control probe (Left; Cat. No. 310043) and Hs-BCL6 probe (Right; Cat. No. 407251), 40X



RNAscope® Manual Brown Assay performed on FFPE lung cancer tissue under standard condition, using the dapB Negative Control probe (Left; Cat. No. 310043) and Hs-BCL6 probe (Right; Cat. No. 407251), 40X

For more information regarding this target gene: <http://www.ncbi.nlm.nih.gov/gene/604>

Note: ACD always recommends RNA quality verification using control probes, prior to running a target marker.

Expression pattern may vary from data shown here based on tissue preparation methods and/or associated sample biology.