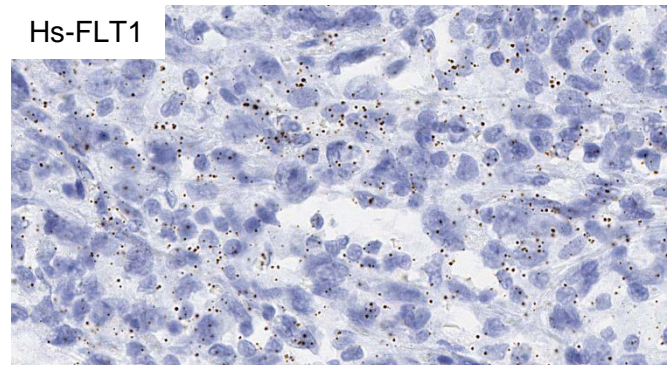
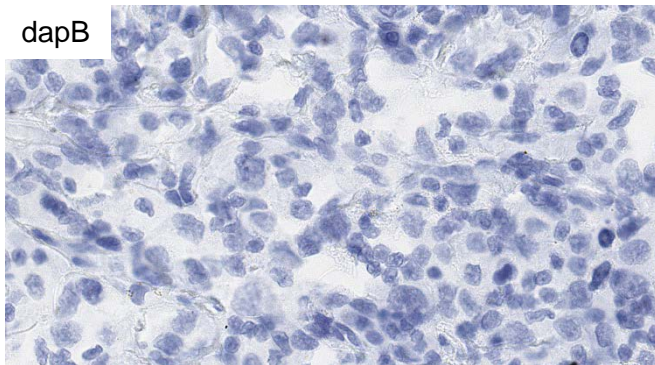


### RNASCOPE® PROBE INFORMATION

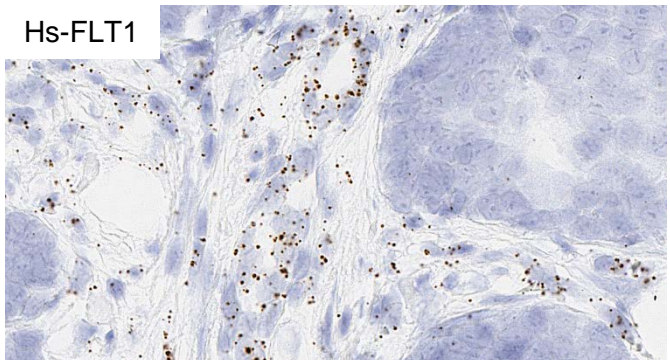
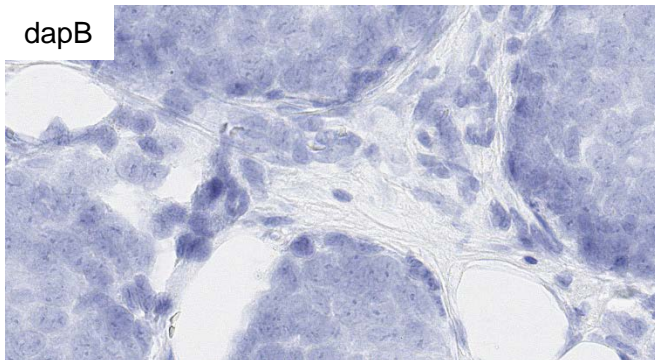
<b>Catalog number:</b>	560701 (Manual)*, 560709 (2.5 VS assay)*, 560708 (2.5 LS assay)*
<b>Species:</b>	Homo sapiens
<b>Target Gene:</b>	FLT1
<b>Alternate names:</b>	FLT; FLT-1; VEGFR1; VEGFR-1
<b>Entrez Gene ID:</b>	2321
<b>Accession#:</b>	NM_001160031.1
<b>Unigene:</b>	Hs.594454
<b>Target Sequence:</b>	Homo sapiens fms-related tyrosine kinase 1 (FLT1), transcript variant 4, mRNA
<b>Probe Region:</b>	817-1810
<b>ZZ pair number:</b>	20

\* Target region is the same across RNAscope® manual and automation assays

### PROBE DATA



RNAscope® Manual Brown Assay performed on FFPE bladder cancer tissue under standard condition, using the dapB Negative Control probe (Left; Cat. No. 310043) and Hs-FLT1 probe (Right; Cat. No. 560701), 40X



RNAscope® Manual Brown Assay performed on FFPE breast cancer tissue under standard condition, using the dapB Negative Control probe (Left; Cat. No. 310043) and Hs-FLT1 probe (Right; Cat. No. 560701), 40X

For more information regarding this target gene: <http://www.ncbi.nlm.nih.gov/gene/2321>

**Note:** ACD always recommends RNA quality verification using control probes, prior to running a target marker.

Expression pattern may vary from data shown here based on tissue preparation methods and/or associated sample biology.