



TARGET PROBE: HS-EGF

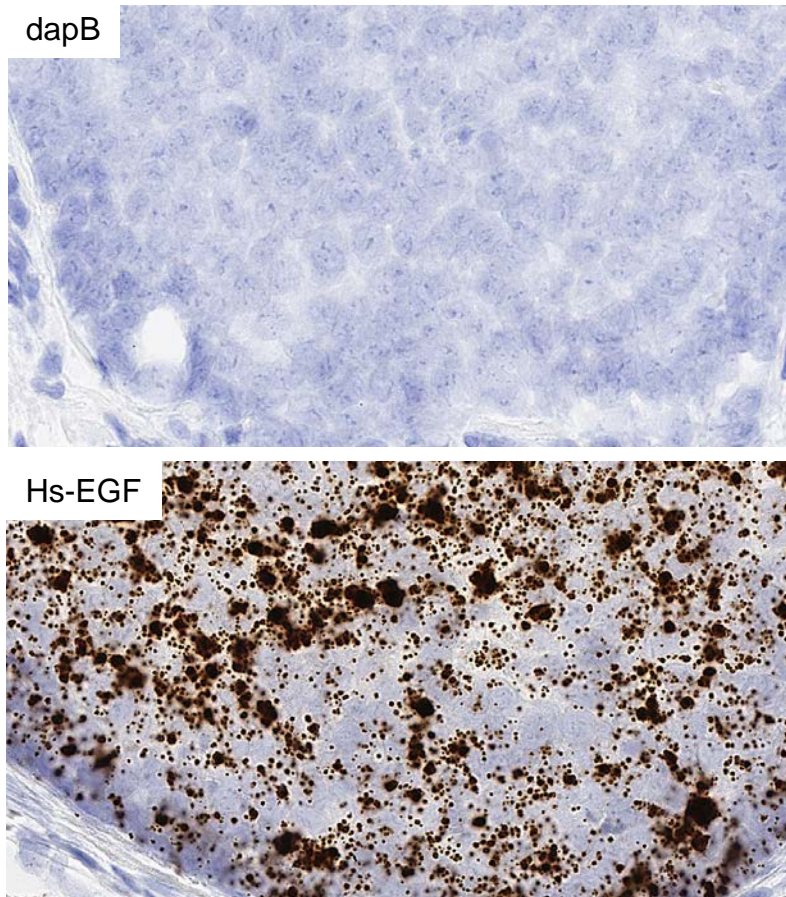
ADVANCED CELL DIAGNOSTICS

RNASCOPE® PROBE INFORMATION

| | |
|-------------------------|--|
| Catalog number: | 605771 (Manual)*, 605779 (2.5 VS assay)*, 605778 (2.5 LS assay)* |
| Species: | Homo sapiens |
| Target Gene: | EGF |
| Alternate names: | EGF; URG; HOMG4 |
| Entrez Gene ID: | 1950 |
| Accession#: | NM_001178130.1 |
| Unigene: | Hs.419815 |
| Target Sequence: | Homo sapiens epidermal growth factor (EGF), mRNA |
| Probe Region: | 762-2222 |
| ZZ pair number: | 30 |

* Target region is the same across RNAscope® manual and automation assays

PROBE DATA



RNAscope® Manual Brown Assay performed on FFPE breast cancer tissue under standard condition, using the dapB Negative Control probe (Top; Cat. No. 310043) and Hs-EGF probe (Bottom; Cat. No. 605771), 40X

For more information regarding this target gene: <http://www.ncbi.nlm.nih.gov/gene/1950>

Note: ACD always recommends RNA quality verification using control probes, prior to running a target marker.

Expression pattern may vary from data shown here based on tissue preparation methods and/or associated sample biology.