



TARGET PROBE: HS-CDKN1A

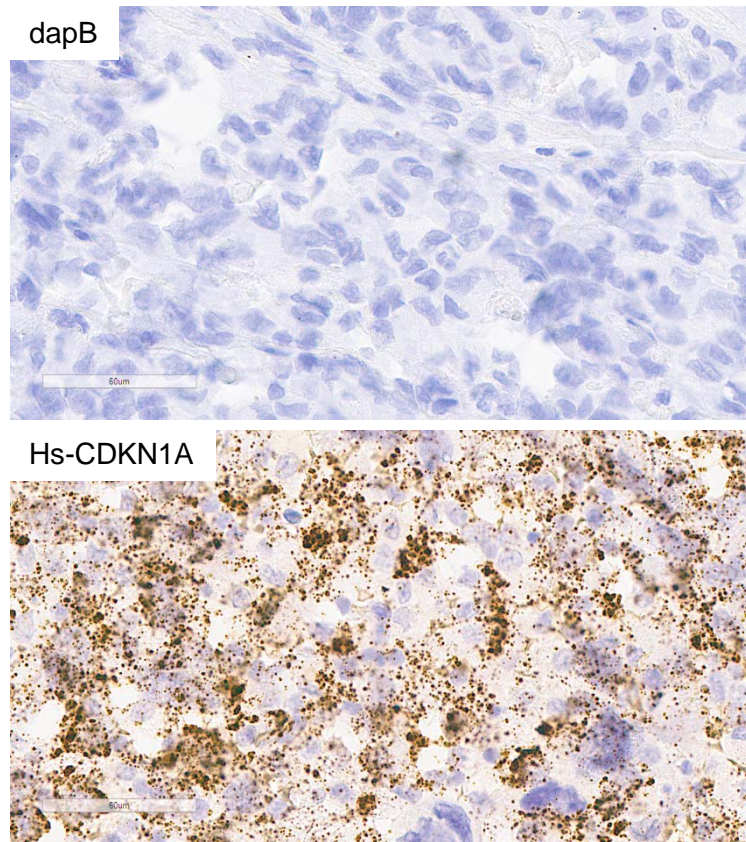
ADVANCED CELL DIAGNOSTICS

RNASCOPE® PROBE INFORMATION

Catalog number:	311401 (Manual)*, 311409 (2.5 VS assay)*, 311408 (2.5 LS assay)*
Species:	Homo sapiens
Target Gene:	CDKN1A
Alternate names:	CDKN1A; P21; CIP1; SDI1; WAF1; CAP20; CDKN1; MDA-6; p21CIP1
Entrez Gene ID:	1026
Accession#:	NM_078467.2
Unigene:	Hs.370771
Target Sequence:	Homo sapiens cyclin-dependent kinase inhibitor 1A (p21, Cip1) (CDKN1A), transcript variant 2, mRNA
Probe Region:	74-1500
ZZ pair number:	19

* Target region is the same across RNAScope® manual and automation assays

PROBE DATA



RNAScope® Manual Brown Assay performed on FFPE bladder cancer tissue under standard condition, using the dapB Negative Control probe (Top; Cat. No. 310043) and Hs-CDKN1A probe (Bottom; Cat. No. 311401), 40X

For more information regarding this target gene: <http://www.ncbi.nlm.nih.gov/gene/1026>

Note: ACD always recommends RNA quality verification using control probes, prior to running a target marker.

Expression pattern may vary from data shown here based on tissue preparation methods and/or associated sample biology.