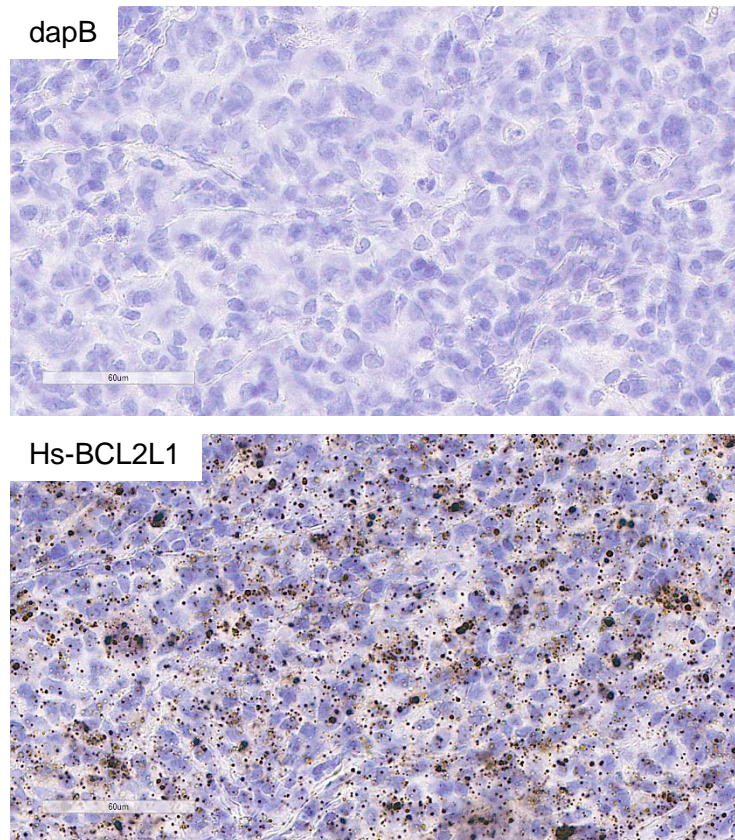


RNASCOPE® PROBE INFORMATION

<b>Catalog number:</b>	408271 (Manual)*, 408279 (2.5 VS assay)*, 408278 (2.5 LS assay)*
<b>Species:</b>	Homo sapiens
<b>Target Gene:</b>	BCL2L1
<b>Alternate names:</b>	BCL-XL/S; BCL2L; BCLX; BCLXL; BCLXS; Bcl-X; PPP1R52; bcl-xL; bcl-xS
<b>Entrez Gene ID:</b>	598
<b>Accession#:</b>	NM_001191.2
<b>Unigene:</b>	Hs.516966
<b>Target Sequence:</b>	Homo sapiens BCL2-like 1 (BCL2L1) transcript variant 2 mRNA
<b>Probe Region:</b>	2-1281
<b>ZZ pair number:</b>	20

\* Target region is the same across RNAscope® manual and automation assays

PROBE DATA



RNAscope® Manual Brown Assay performed on FFPE lymphoma tissue under standard condition, using the dapB Negative Control probe (Top; Cat. No. 310043) and Hs-BCL2L1 probe (Bottom; Cat. No. 408271), 40X

For more information regarding this target gene: <http://www.ncbi.nlm.nih.gov/gene/598>

**Note:** ACD always recommends RNA quality verification using control probes, prior to running a target marker.

Expression pattern may vary from data shown here based on tissue preparation methods and/or associated sample biology.